



MONTHLY REPORT

September 2023

September 2023 Overall

BSP SouthPool

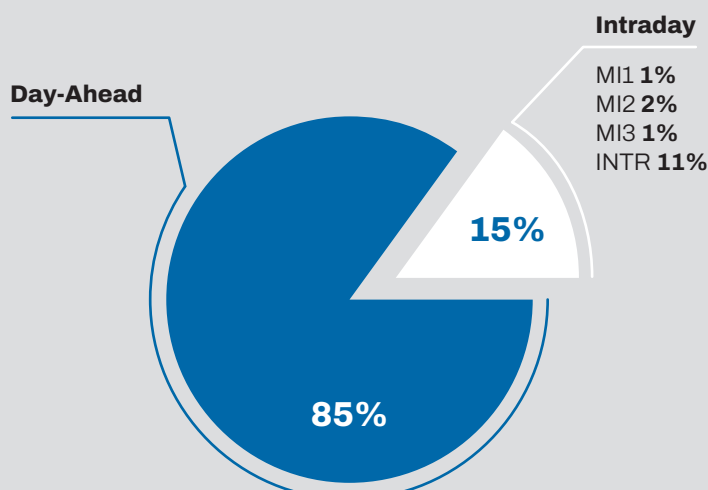
Day-Ahead

Volume (MWh)		
Total	743.631	↑1,2%
Avg. daily	24.788	↑4,4%
Max. daily	31.131	↑0,6%
Min. daily	20.306	↑24,2%

Price (€/MWh)					
	Avg. Daily		Max. Daily	Min. Daily	Spec. Daily Volatility
Base	102,56	↑7,7%	143,91	66,64	8%
Euro-Peak	100,85	↑12,3%	142,65	43,61	14%

Intraday

Volume (MWh)		
MI1	8.686	↓88,0%
MI2	15.915	↑29,9%
MI3	7.155	↑28,2%
INTR	100.019	↓40,7%



Day-Ahead
743.630 GWh
(+1% MoM)

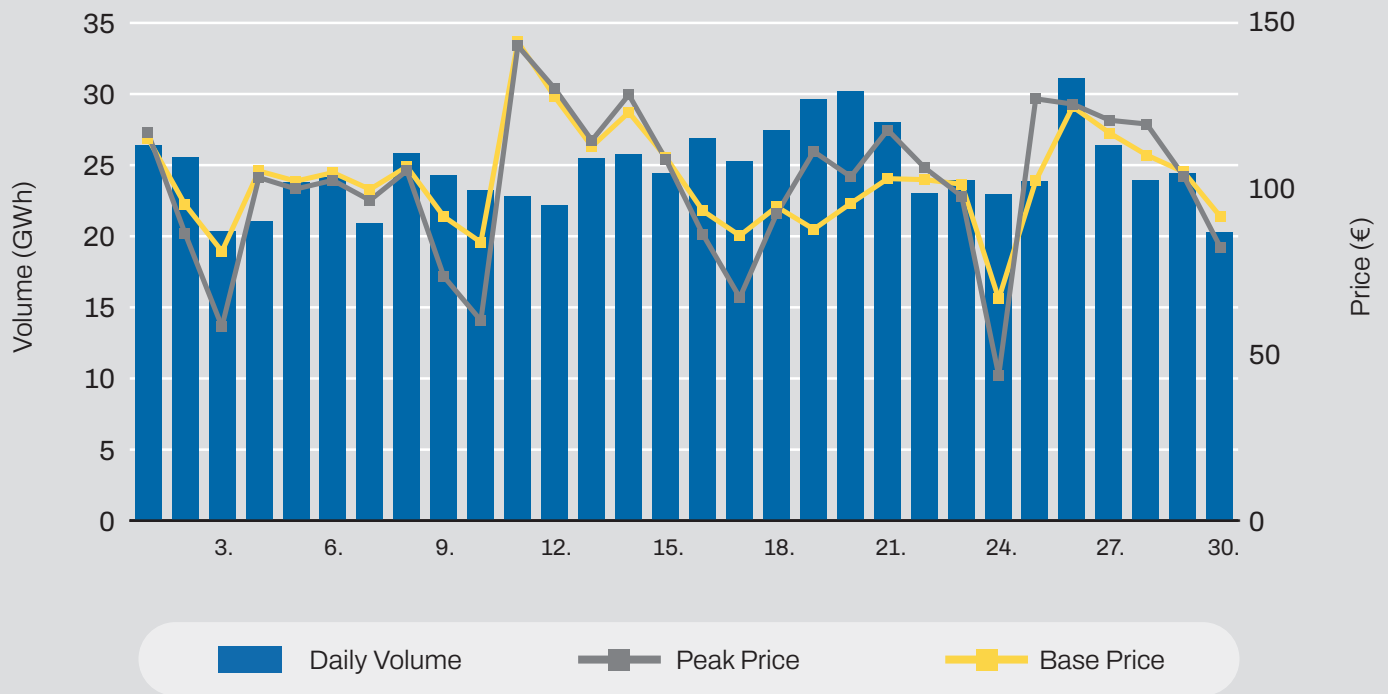
Base Avg.
1102,56 €/MWh
(+8% MoM)

Intraday
131.775 GWh
(-24% MoM)

Daily Average
24.787 GWh
(+5% MoM)

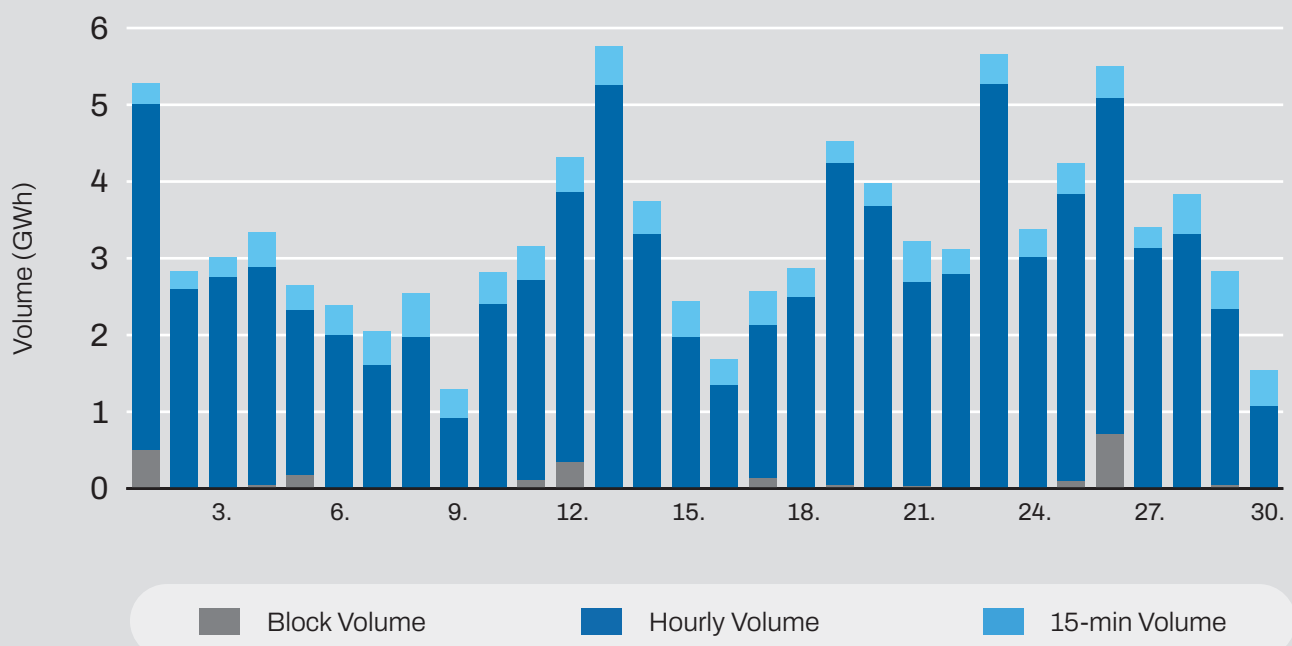
Daily Record
31.130 GWh
(+1% MoM)

Day-Ahead Volumes and Prices



Intraday Continuous Trading

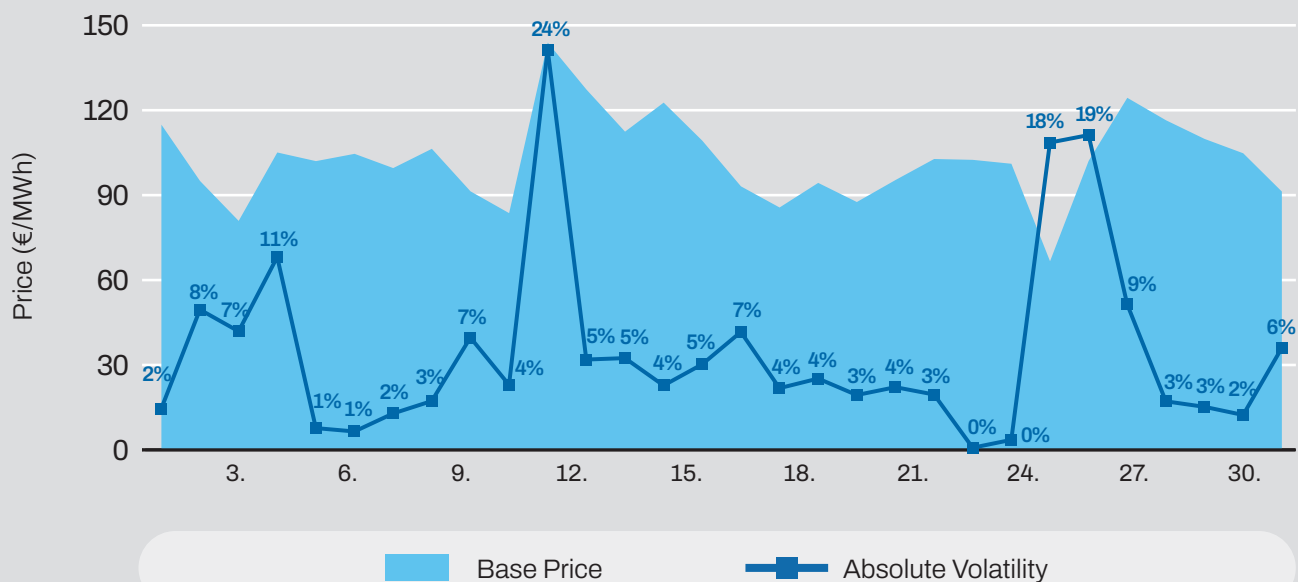
Volumes by Products



Average Monthly Day-Ahead Auction

Average Hourly Prices						Cross-Zonal Capacities	
Hour	Volume (MWh)	Base price (€/MWh)	Hour	Volume (MWh)	Base price (€/MWh)	Export/Import	Allocated (MWh)
1	959	92,60	13	1.158	70,03	SI → IT	312.979
2	967	86,69	14	1.144	63,18	IT → SI	52.259
3	990	83,32	15	1.102	65,37	SI → AT	94.187
4	988	80,71	16	1.072	78,26	AT → SI	242.072
5	983	81,64	17	927	91,09	SI → HU	64.712
6	946	92,24	18	993	114,38	HU → SI	159.060
7	1.002	114,21	19	1.107	147,45	SI → HR	88.279
8	986	131,01	20	1.244	194,79	HR → SI	75.066
9	934	120,83	21	1.205	160,11		
10	1.007	102,43	22	1.000	123,78		
11	1.065	85,81	23	977	107,76		
12	1.101	76,57	24	930	97,20	Total	1.088.614

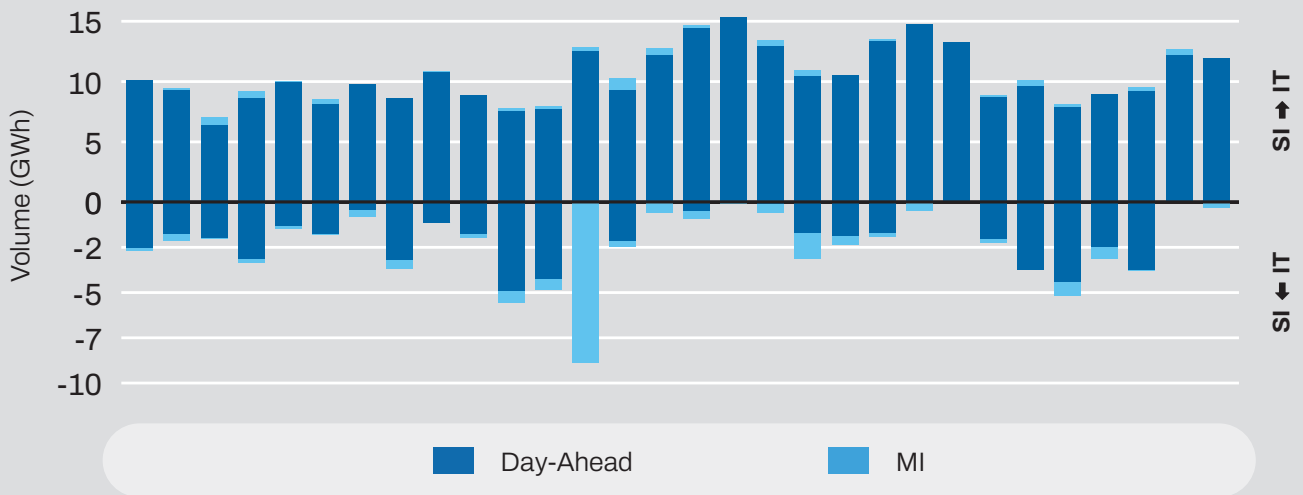
Daily Volatility of Base Price



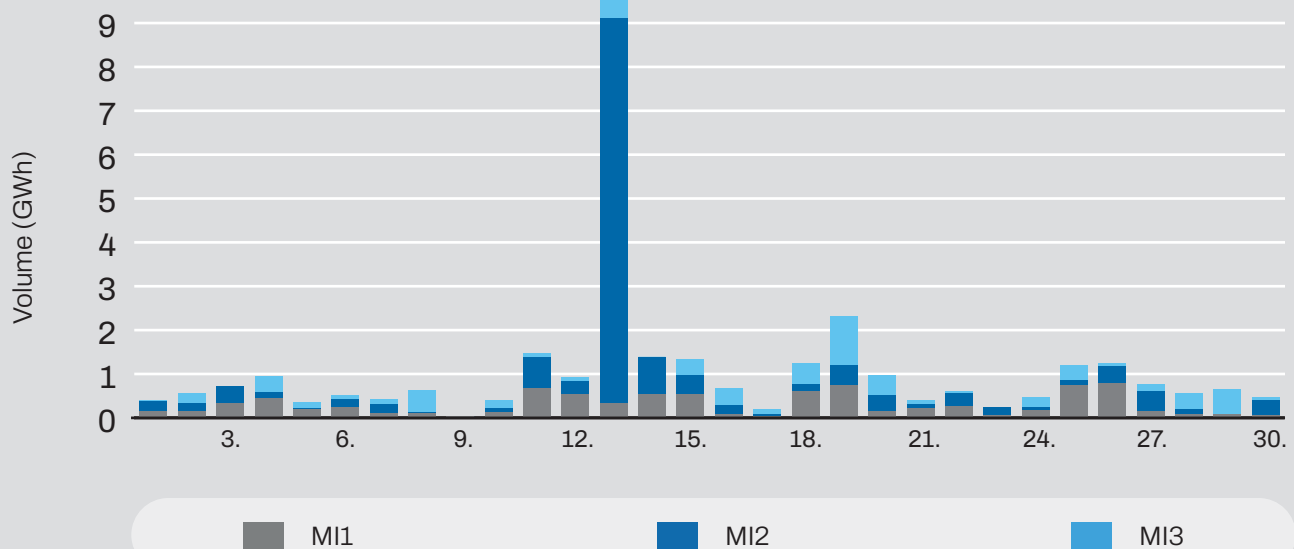
MI1, MI2, M3 Implicit Auctions

Cross-Zonal-Capacities		
	SI → IT	IT → SI
Offered (MWh)	337.350	1.727.821
Allocated (MWh)	7.748	19.023
% Allocated	2,30%	1,10%

Allocated CZC Values on Slovenian-Italian Border



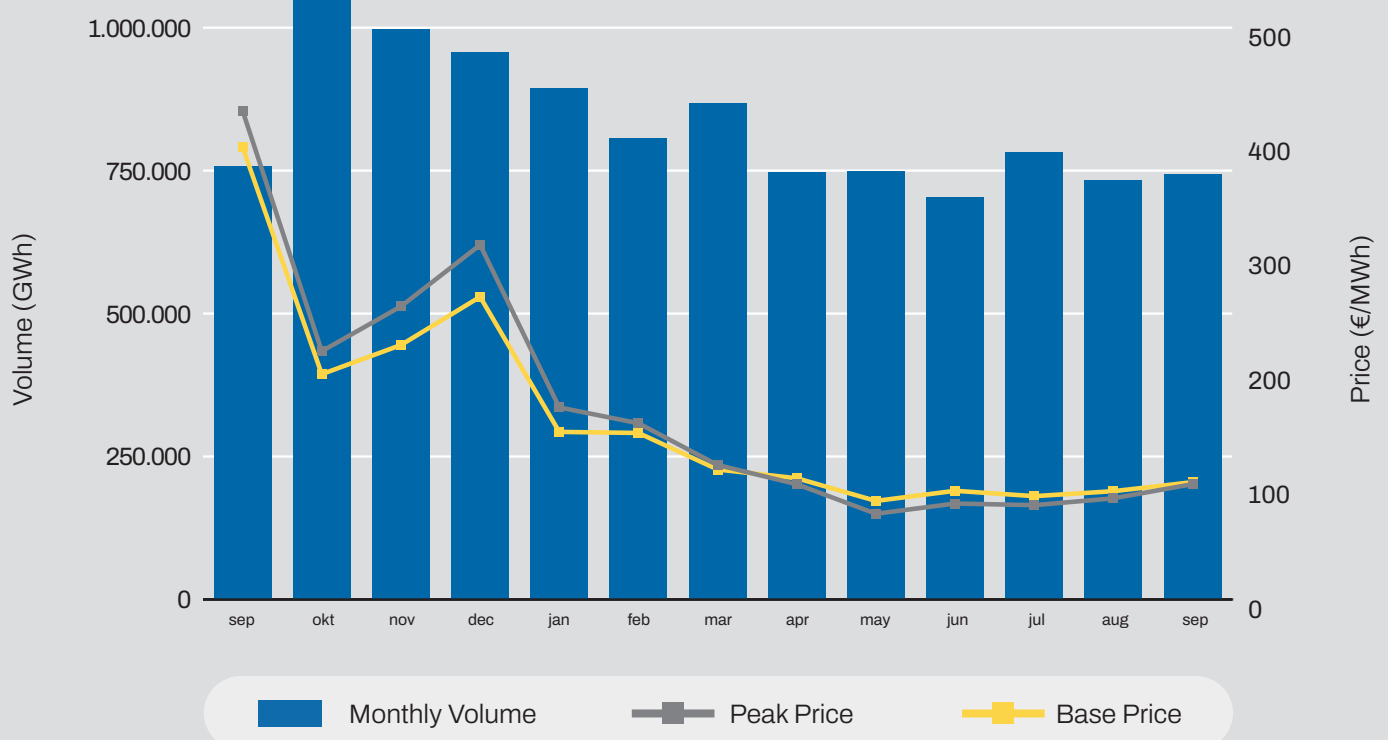
Intraday Auction



Comparison

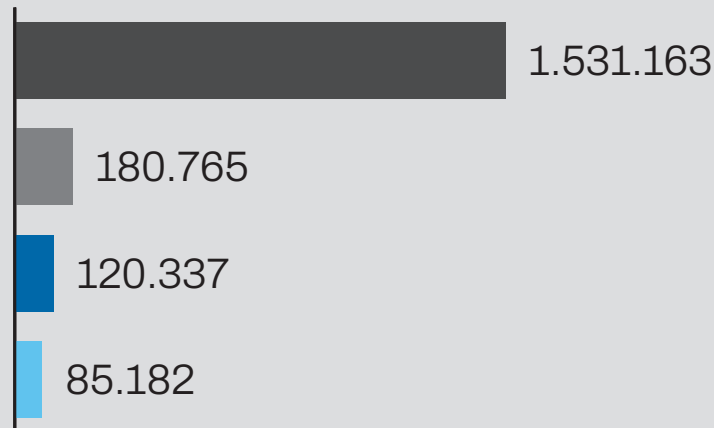
Day-Ahead Auction			
	September 2023	August 2023	September 2022
Avg. Daily Volume (MWh)	24.788	23.688	25.295
Avg. Hourly Volume (MWh)	1.033	987	1.054
Avg. Base Price (€/MWh)	102,56	94,69	395,63
Avg. Euro-Peak Price (€/MWh)	100,85	88,46	427,40

Day-Ahead Market Volumes and Prices



Past 12 Months Trade Information

Intraday Volumes (MWh) - Total Volume from September 2022



Total Volume from September 2022

	Continuous	MI1	MI2	MI3	
Sep	87.292	11.962	8.812	12.802	
Oct	78.890	15.640	12.247	7.506	
Nov	89.375	21.479	9.915	9.588	
Dec	113.614	12.879	12.597	5.181	
Jan	115.509	19.657	9.284	5.387	
Feb	92.549	15.542	6.276	4.623	
Mar	126.292	10.328	4.933	4.653	
Apr	122.218	6.762	2.892	6.115	
May	117.949	13.002	5.196	3.595	
Jun	111.114	12.820	12.836	5.689	
Jul	148.368	15.681	8.271	7.752	
Aug	140.685	16.329	11.164	5.137	
Sep	187.311	8.686	15.915	7.155	

Continuous
 MI1
 MI2
 MI3

September 2023 Overall

Seepex

Day-Ahead
351.916 GWh
(+1% MoM)

Base Avg.
103,07 €/MWh
(+8% MoM)

Daily
Average
11.730 GWh
(+5% MoM)

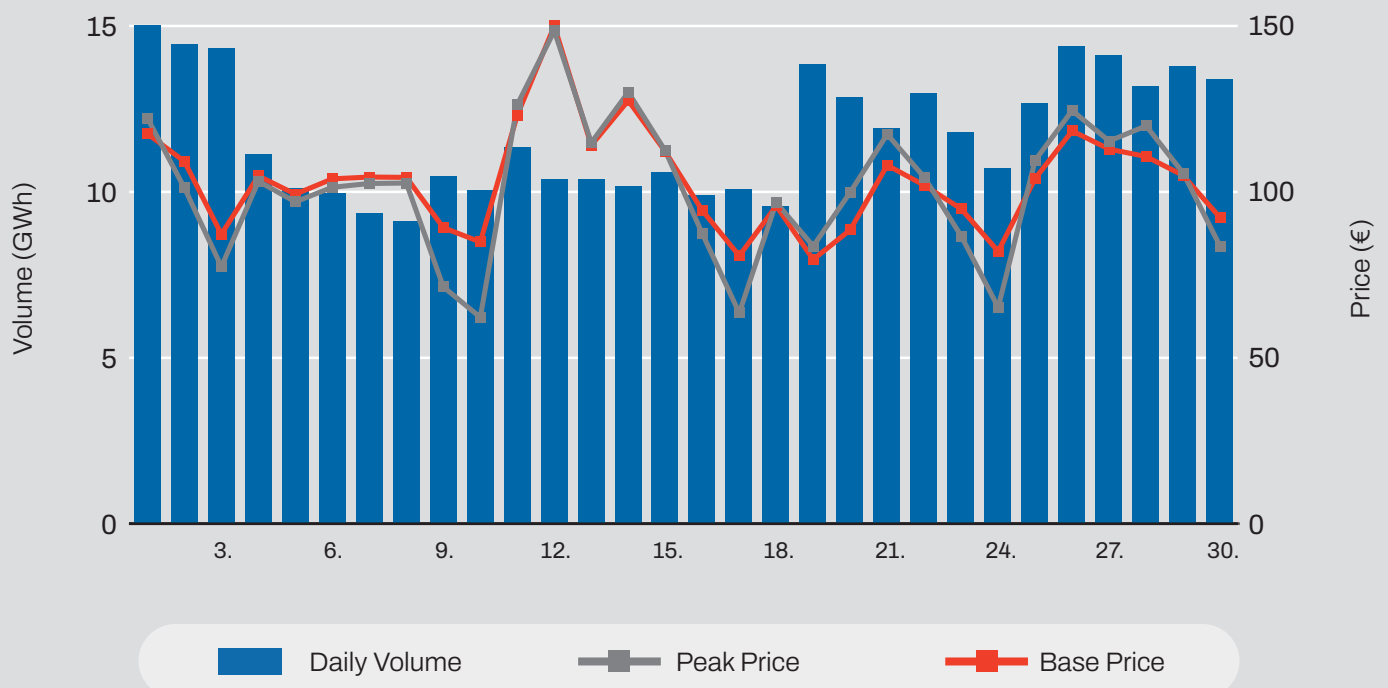
Daily
Record
15.011 GWh
(+1% MoM)

Day-Ahead

Volume (MWh)		
Total	351.916	↓ 19,1%
Avg. daily	11.731	↓ 16,4%
Max. daily	15.012	↓ 24,9%
Min. daily	9.100	↑ 1,0%

Price (€/MWh)				
	Avg. Daily	Max. Daily	Min. Daily	Spec. Daily Volatility
Base	103,07 ↑ 6,1%	149,57	79,38	6,5%
Euro-Peak	93,15 ↑ 0%	148,09	61,99	0%

Day-Ahead Volumes and Prices

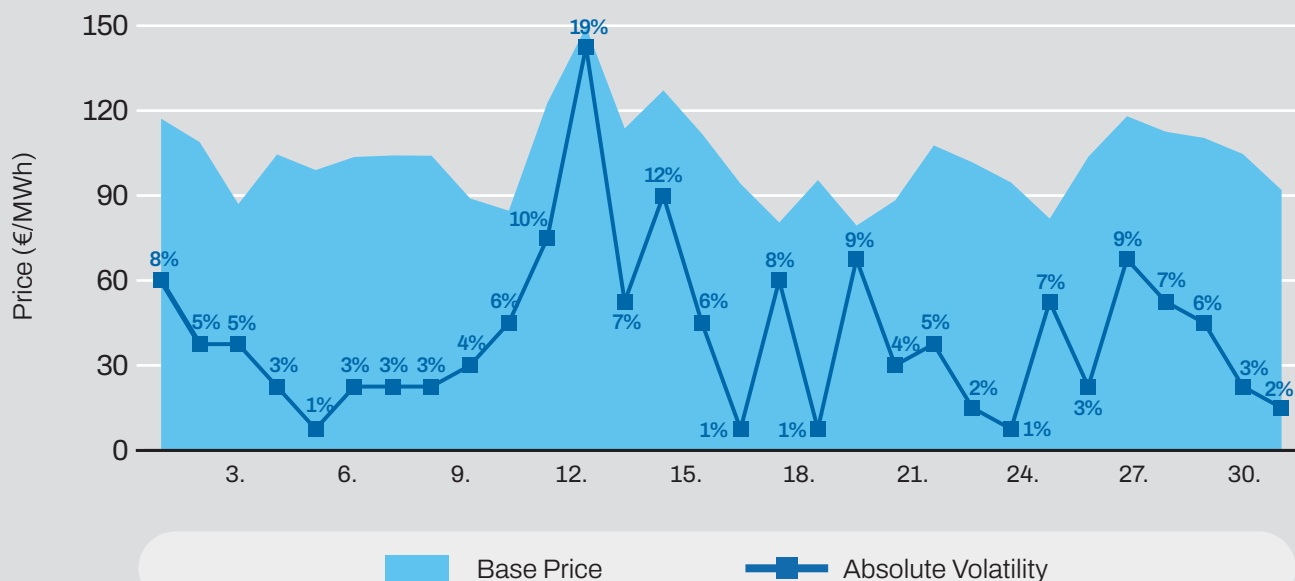


Day-Ahead Auction

Average Hourly Prices

Hour	Volume (MWh)	Base price (€/MWh)	Hour	Volume (MWh)	Base price (€/MWh)
1	4.119	95,03	13	5.522	72,65
2	4.463	89,03	14	5.649	67,19
3	4.475	85,18	15	5.361	68,95
4	4.652	82,62	16	5.011	81,36
5	4.538	84,68	17	4.694	93,40
6	4.397	94,05	18	4.992	112,19
7	5.057	111,87	19	5.629	144,77
8	5.020	126,18	20	5.778	185,26
9	4.615	117,04	21	5.545	161,26
10	4.543	101,39	22	5.260	126,68
11	4.654	87,86	23	4.405	108,56
12	5.196	79,15	24	4.013	97,22

Daily Volatility of Base Price



Intraday trading on SEEPEX started on **25th July 2023**
 Number of participants: **20**



ADEX GROUP holding company Ltd.

Dunajska cesta 156,
1000 Ljubljana, Slovenia

T SI +386 1 /620 76 76

T RS +381 11 715 28 43

E info@adex-spot.com