



MONTHLY REPORT

October 2023

October 2023 Overall

BSP SouthPool

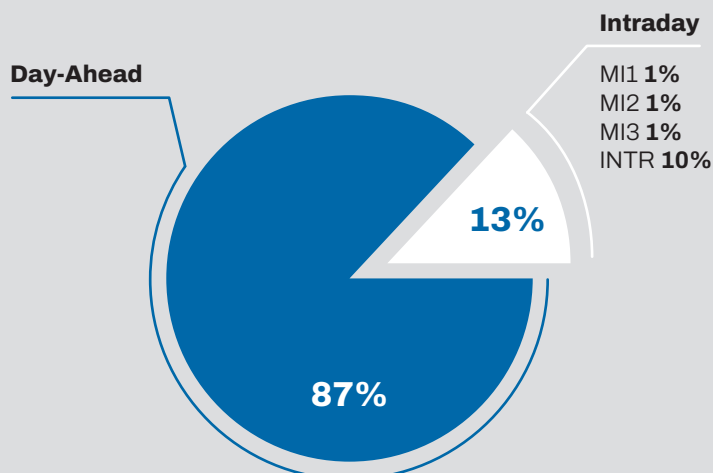
Day-Ahead

Volume (MWh)		
Total	991.554	↑ 33,3%
Avg. daily	31.986	↑ 29,0%
Max. daily	43.161	↑ 38,6%
Min. daily	21.407	↑ 5,4%

Price (€/MWh)					
	Avg. Daily		Max. Daily	Min. Daily	Spec. Daily Volatility
Base	103,56	↑ 1,0%	142,86	35,21	1%
Euro-Peak	112,23	↑ 10,1%	153,77	38,38	11%

Intraday

Volume (MWh)		
MI1	10.930	↑ 20,5%
MI2	9.677	↓ 64,5%
MI3	13.897	↑ 48,5%
INTR	112.298	↑ 10,9%



Day-Ahead
991.554 GWh
(+33% MoM)

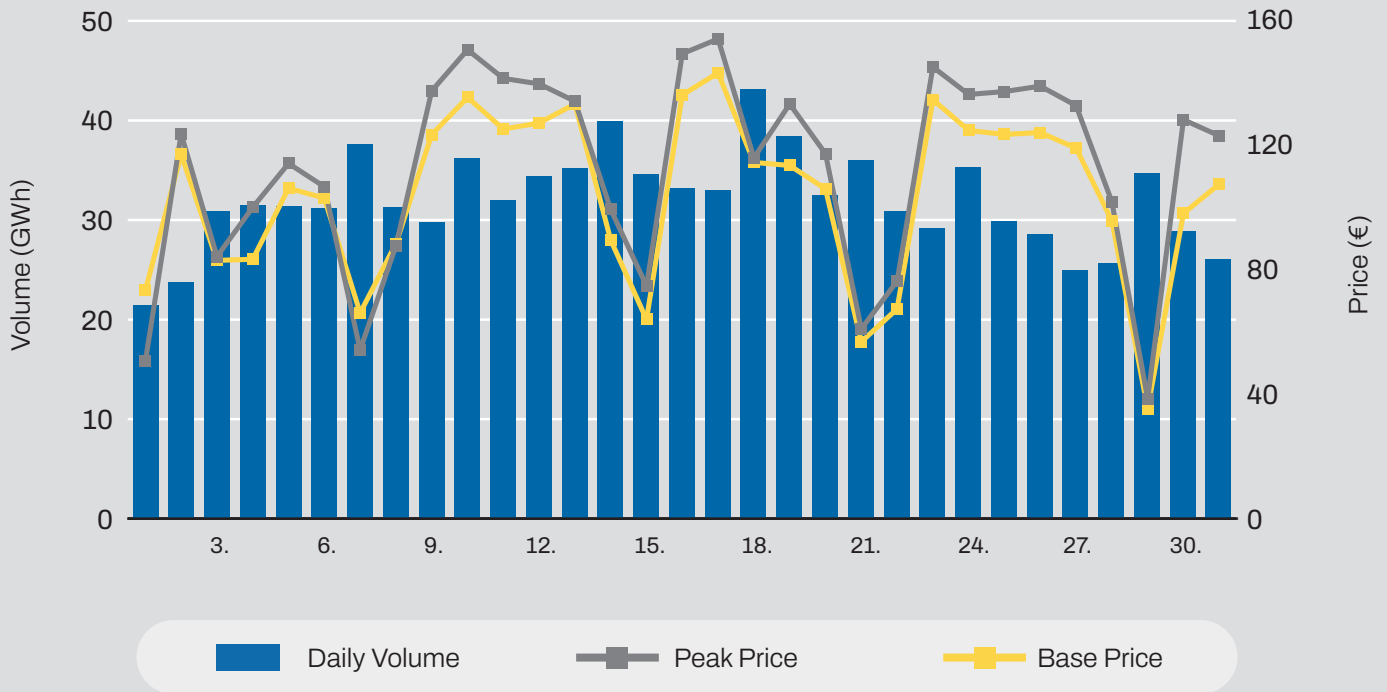
Base Avg.
103,56 €/MWh
(+1% MoM)

Intraday
146.801 GWh
(+11% MoM)

Daily Average
31.986 GWh
(+29% MoM)

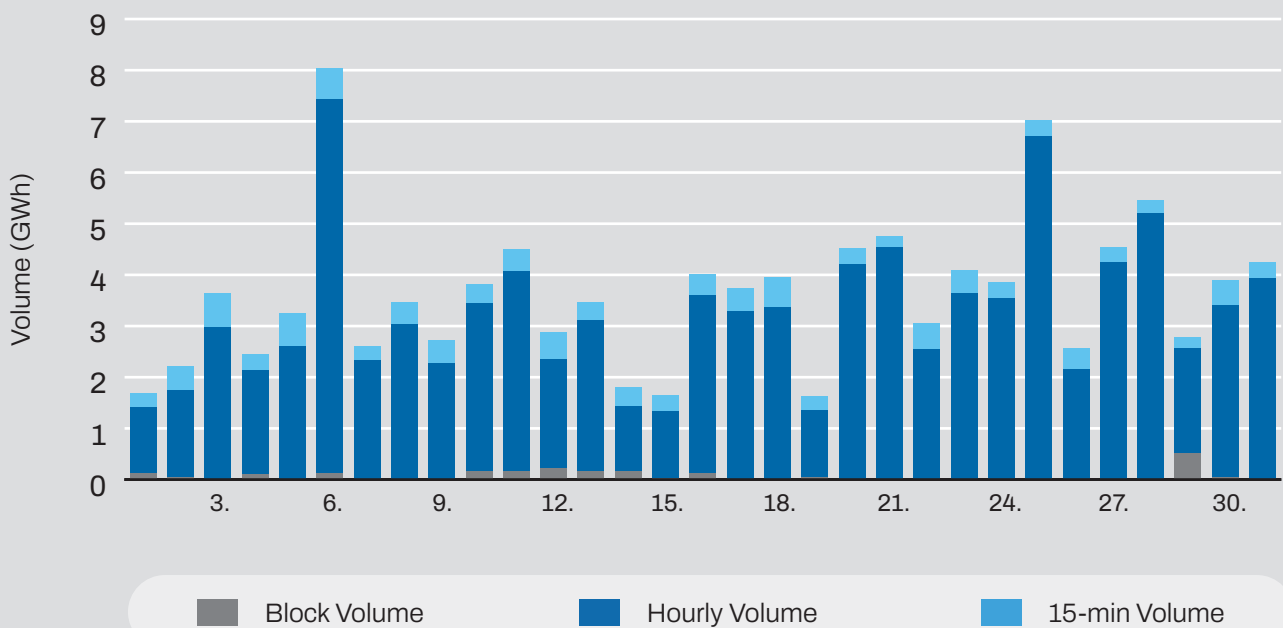
Daily Record
43.161 GWh
(+39% MoM)

Day-Ahead Volumes and Prices



Intraday Continuous Trading

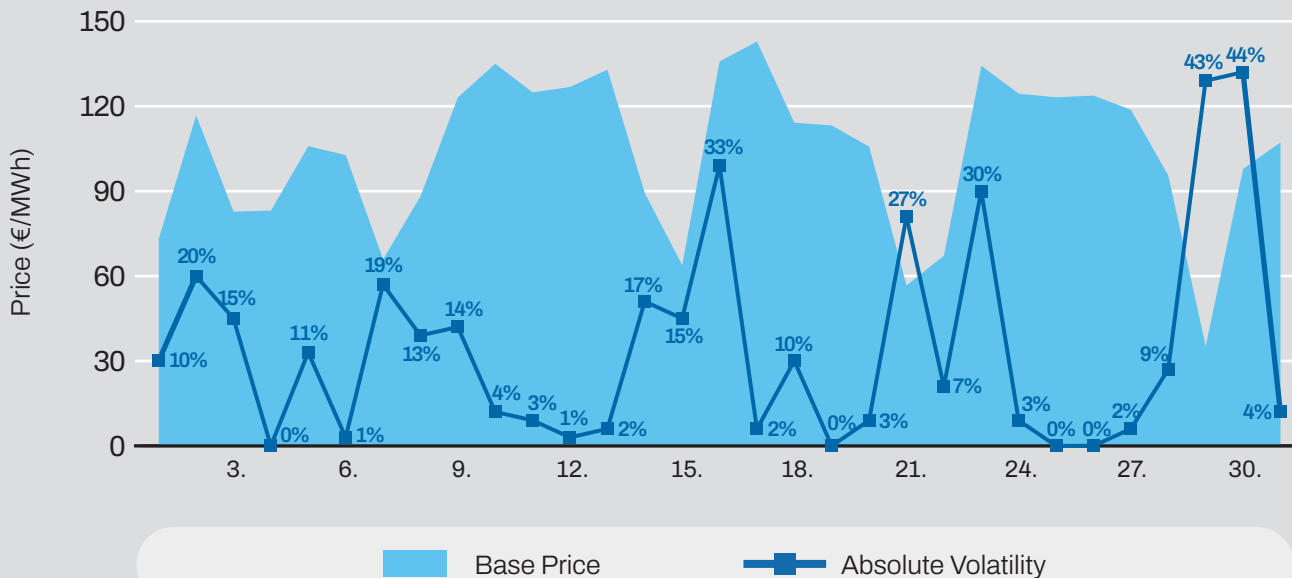
Volumes by Products



Average Monthly Day-Ahead Auction

Average Hourly Prices						Cross-Zonal Capacities	
Hour	Volume (MWh)	Average price (€/MWh)	Hour	Volume (MWh)	Average price (€/MWh)	Export/Import	Allocated (MWh)
1	1.337	82,96	13	1.420	79,74	SI → IT	411.857
2	1.330	75,21	14	1.372	74,14	IT → SI	30.969
3	1.326	69,14	15	1.399	80,21	SI → AT	8.880
4	1.316	66,64	16	1.305	98,42	AT → SI	532.088
5	1.352	68,73	17	1.234	119,40	SI → HU	33.198
6	1.309	80,52	18	1.279	138,05	HU → SI	230.338
7	1.232	108,64	19	1.440	160,89	SI → HR	139.431
8	1.301	135,02	20	1.521	171,93	HR → SI	34.490
9	1.242	128,96	21	1.378	138,13	Total	1.421.249
10	1.224	113,75	22	1.367	115,20		
11	1.294	95,42	23	1.331	105,59		
12	1.432	85,84	24	1.202	91,69		

Daily Volatility of Base Price

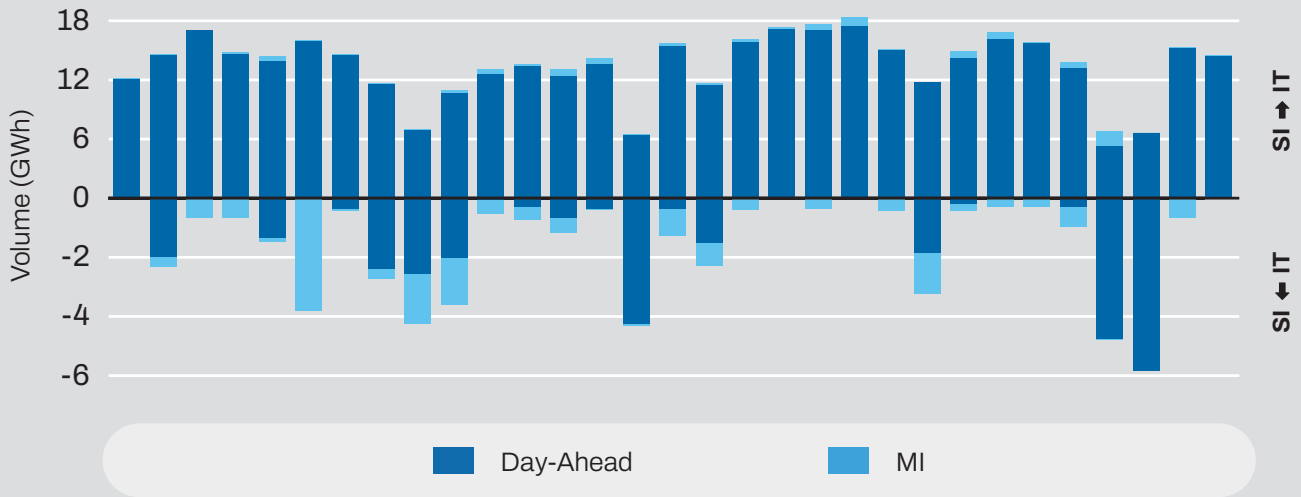


MI1, MI2, M3 Implicit Auctions

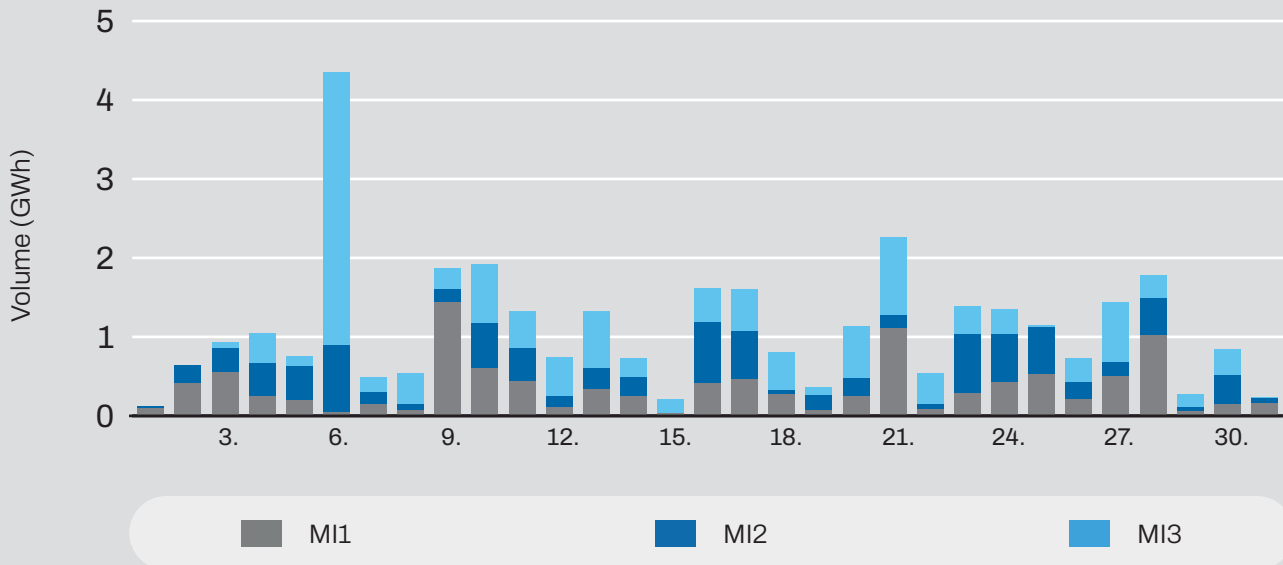
Cross-Zonal-Capacities

	SI → IT	IT → SI
Offered (MWh)	319.200	2.166.324
Allocated (MWh)	20.316	34.538
% Allocated	6,36%	1,59%

Allocated CZC Values on Slovenian-Italian Border



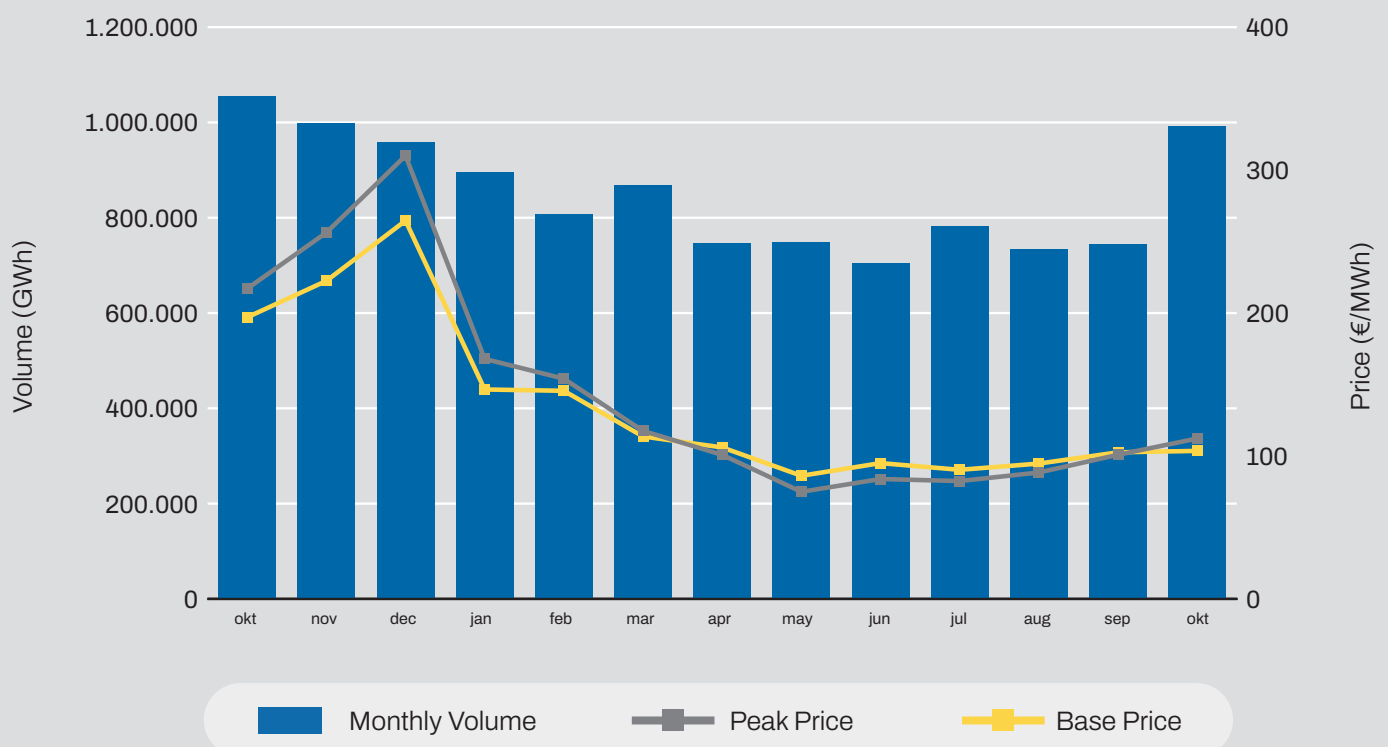
Intraday Auction



Comparison

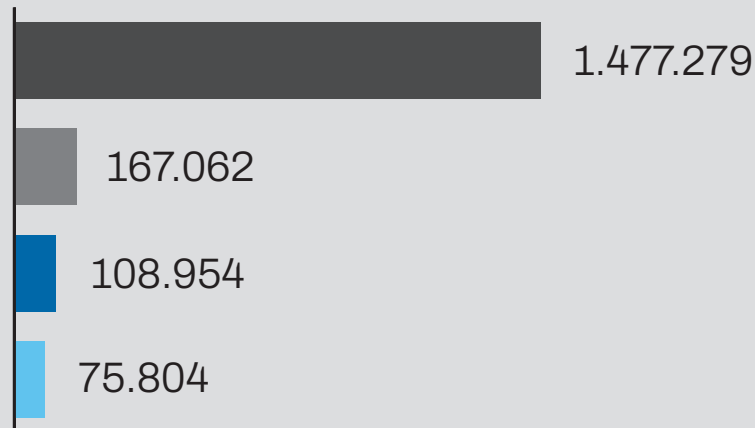
Day-Ahead Auction			
	October 2023	September 2023	October 2022
Avg. Daily Volume (MWh)	24.788	23.688	25.295
Avg. Hourly Volume (MWh)	1.033	987	1.054
Avg. Base Price (€/MWh)	103	95	396
Avg. Euro-Peak Price (€/MWh)	101	88	427

Day-Ahead Market Volumes and Prices



Past 12 Months Trade Information

Intraday Volumes (MWh) - Total Volume from November 2022



Total Volume from November 2022

	Continuous	MI1	MI2	MI3	
Nov	89.375	21.479	9.915	9.588	
Dec	113.614	12.879	12.597	5.181	
Jan	115.509	19.657	9.284	5.387	
Feb	92.549	15.542	6.276	4.623	
Mar	126.292	10.328	4.933	4.653	
Apr	122.218	6.762	2.892	6.115	
May	117.949	13.002	5.196	3.595	
Jun	111.114	12.820	12.836	5.689	
Jul	148.368	15.681	8.271	7.752	
Aug	140.685	16.329	11.164	5.137	
Sep	187.311	8.686	15.915	7.155	
Oct	112.298	13.897	9.677	10.930	

Continuous

MI1

MI2

MI3

October 2023 Overall

Day-Ahead
394.118 GWh
 (+12% MoM)

Base Avg.
106,16 €/MWh
 (+34% MoM)

Daily Average
12.713 GWh
 (+8% MoM)

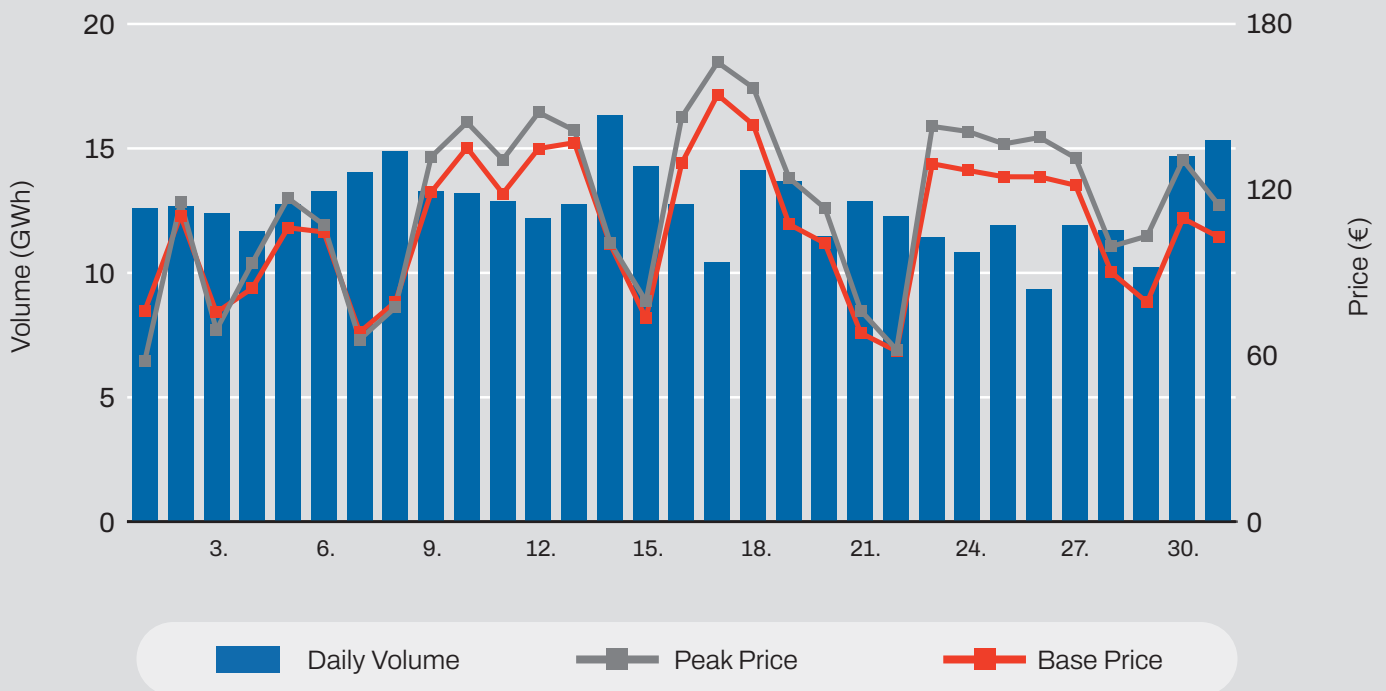
Daily Record
16.336 GWh
 (+9% MoM)

Day-Ahead

Volume (MWh)		
Total	394.118	↑12,0%
Avg. daily	12.713	↑8,4%
Max. daily	16.336	↑8,8%
Min. daily	9.359	↑2,8%

Price (€/MWh)				
	Avg. Daily	Max. Daily	Min. Daily	Spec. Daily Volatility
Base	106,16 ↑25,2%	153,95	61,51	33,7%
Euro-Peak	114,73 ↑46,0%	165,65	58,08	85,1%

Day-Ahead Volumes and Prices

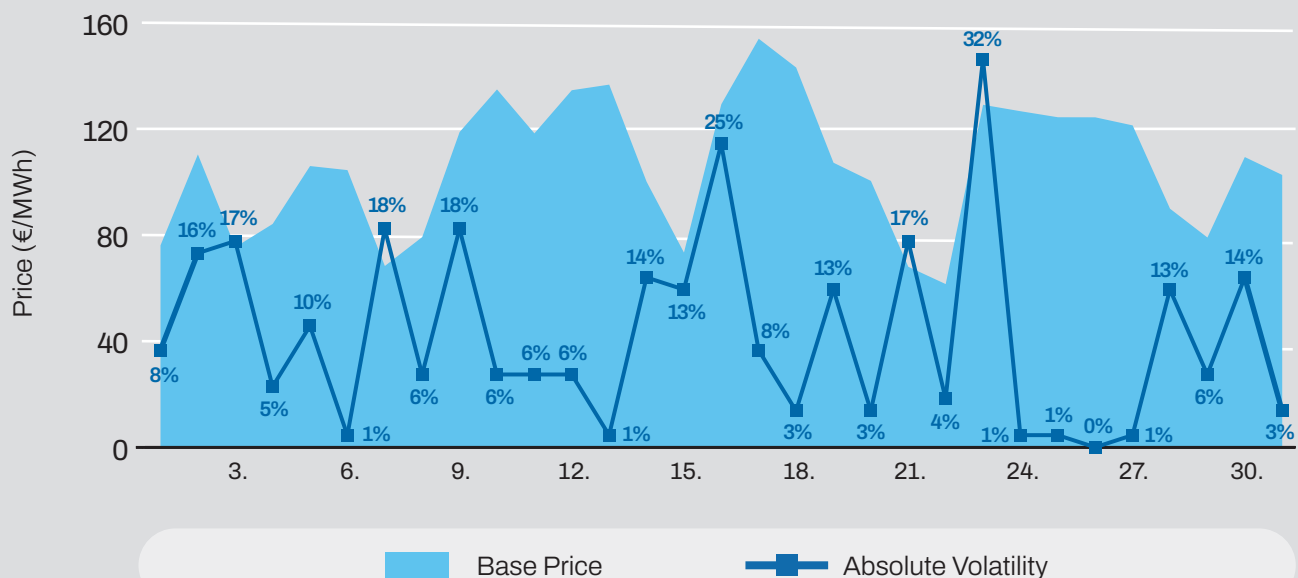


Day-Ahead Auction

Average Hourly Prices

Hour	Average Volume (MWh)	Average price (€/MWh)	Hour	Average Volume (MWh)	Average price (€/MWh)
1	522	88,96	13	531	82,12
2	543	78,51	14	526	79,18
3	546	71,86	15	524	82,30
4	544	68,58	16	512	99,35
5	538	71,29	17	528	119,16
6	521	84,93	18	578	140,15
7	532	111,47	19	588	162,90
8	531	133,33	20	569	183,24
9	515	129,55	21	562	142,32
10	485	111,81	22	501	118,95
11	501	97,40	23	468	107,72
12	542	89,38	24	496	94,17

Daily Volatility of Base Price



Intraday trading on SEEPEX started on **25th July 2023**
 Number of participants: **20**



ADEX GROUP holding company Ltd.

Dunajska cesta 156,
1000 Ljubljana, Slovenia

T SI +386 1 /620 76 76

T RS +381 11 715 28 43

E info@adex-spot.com