



	6,350 (-200)	10,985 (+580)	665 (-15)	6,800 (-115)
9	7,654 (+169)	6,522 (+122)	1,632 (-54)	3,652 (+182)
0	7,150 (-150)	782 (+74)	1,901 (+101)	3,280 (-120)
	2,022 (-18)	631 (+40)	6,287 (-57)	12,630 (+330)

MONTHLY REPORT

April 2024

April 2024 Overall

BSP SouthPool

Day-Ahead

Volume (MWh)		
Total	1.037.651	↑ 20,4%
Avg. daily	34.588	↑ 24,5%
Max. daily	41.383	↑ 5,6%
Min. daily	24.930	↑ 10,6%

Price (€/MWh)					
	Avg. Daily		Max. Daily	Min. Daily	Spec. Daily Volatility
Base	60,18	↓ 6,1%	98,61	17,42	16,68%
Euro-Peak	49,69	↓ 20,9%	94,26	-6,71	26,62%

Day-Ahead
1.037.651 GWh
(20% MoM)

Base Avg.
60,18 €/MWh
(-6% MoM)

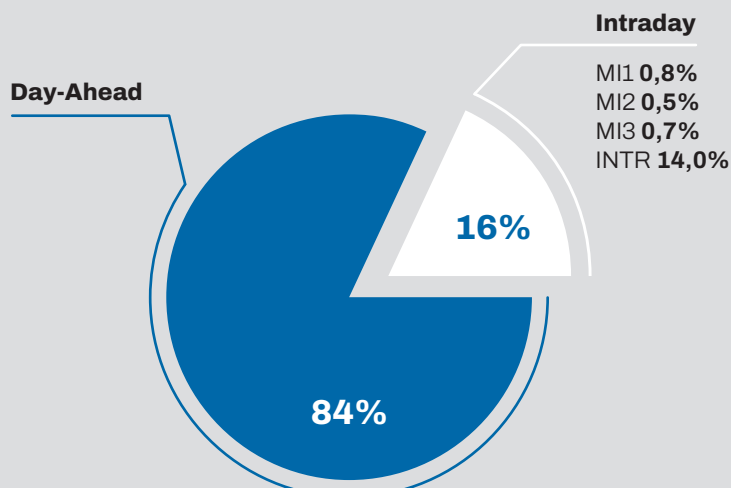
Intraday
193.592 GWh
(0% MoM)

Daily Average
34.588 GWh
(24% MoM)

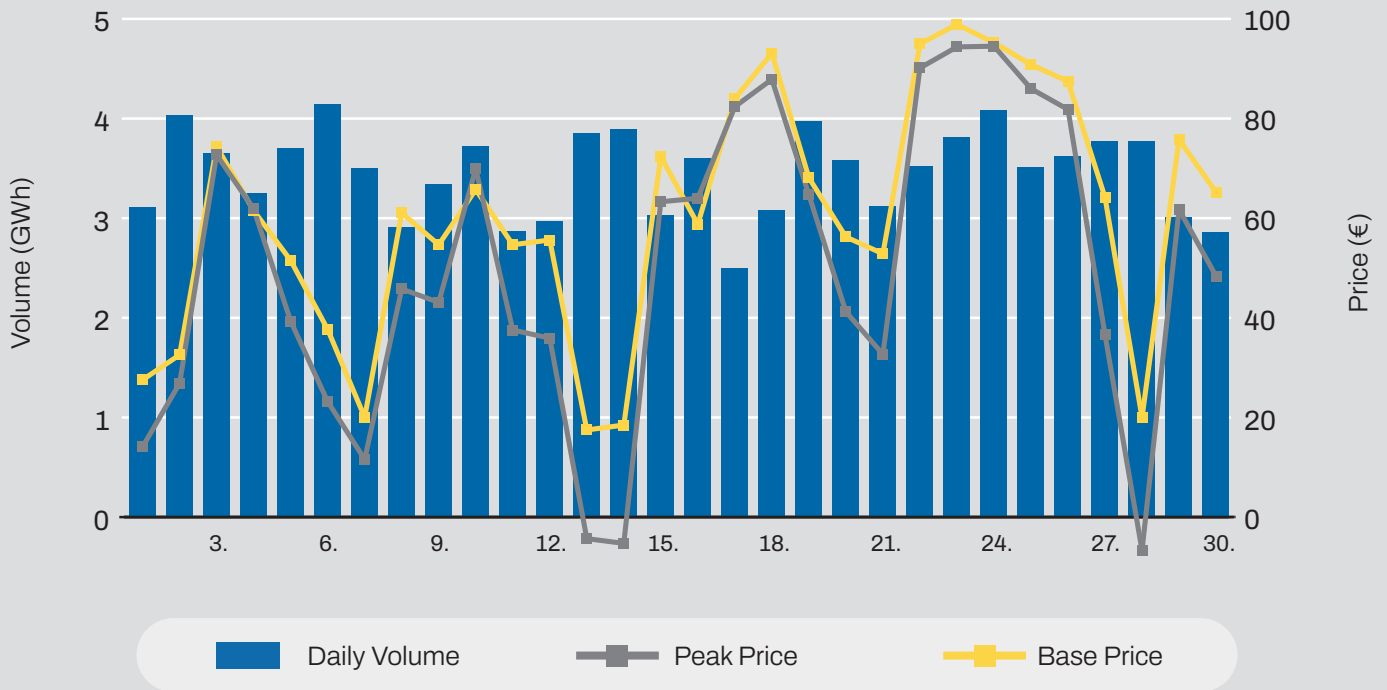
Daily Record
41.383 GWh
(6% MoM)

Intraday

Volume (MWh)		
MI1	9.681	↑ 38,4%
MI2	5.547	↑ 34,6%
MI3	7.689	↓ 14,0%
INTR	170.675	↓ 1,8%

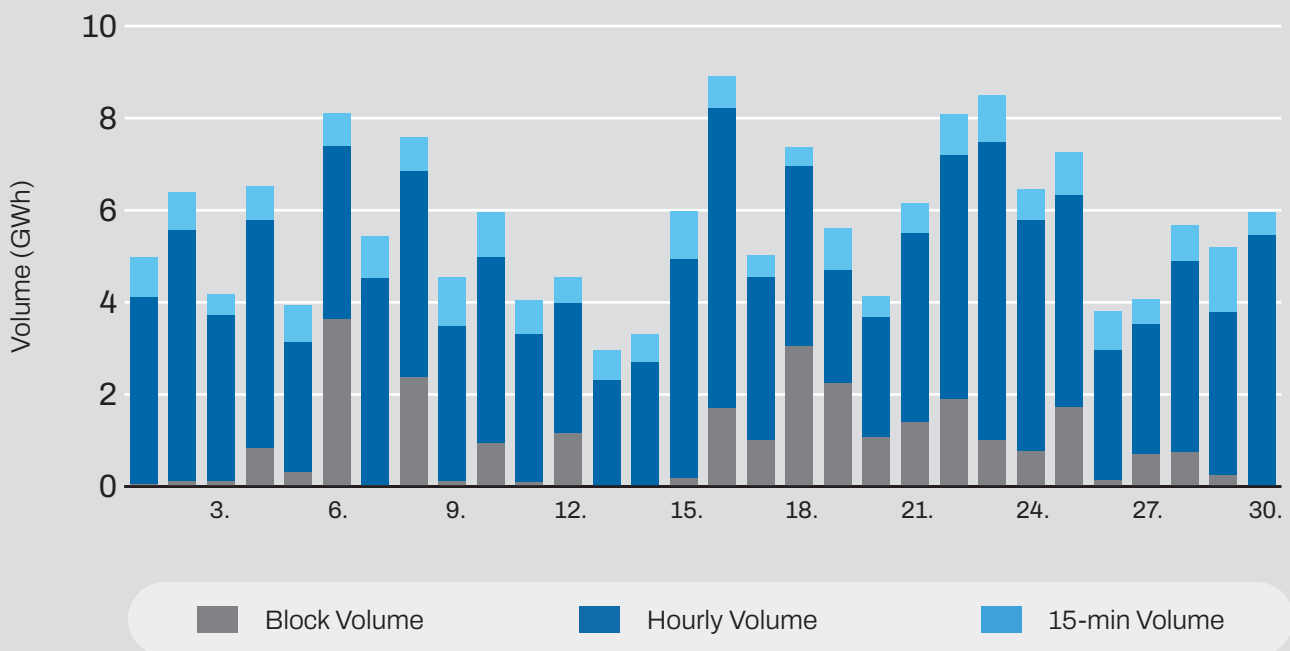


Day-Ahead Volumes and Prices



Intraday Continuous Trading

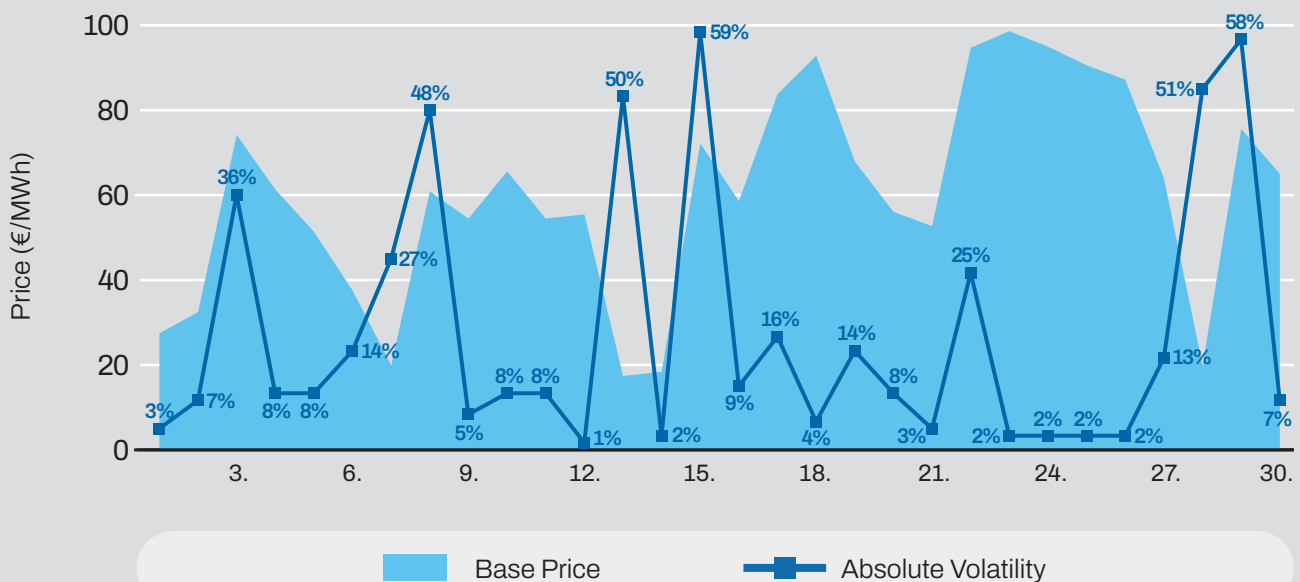
Volumes by Products



Average Monthly Day-Ahead Auction

Average Hourly Prices						Cross-Zonal Capacities	
Hour	Volume (MWh)	Average price (€/MWh)	Hour	Volume (MWh)	Average price (€/MWh)	Export/Import	Allocated (MWh)
1	1.461	62,17	13	1.368	31,19	SI → IT	307.934
2	1.383	55,87	14	1.436	21,16	IT → SI	78.132
3	1.350	51,90	15	1.404	19,19	SI → AT	11.839
4	1.364	51,28	16	1.443	26,81	AT → SI	552.656
5	1.373	54,07	17	1.485	38,37	SI → HU	44.708
6	1.486	59,85	18	1.492	57,55	HU → SI	182.704
7	1.392	74,90	19	1.479	80,92	SI → HR	255.500
8	1.374	87,39	20	1.569	111,47	HR → SI	24.891
9	1.355	75,68	21	1.737	116,31	Total	1.458.363
10	1.295	57,77	22	1.619	89,78		
11	1.314	42,30	23	1.557	76,54		
12	1.361	33,90	24	1.491	68,03		

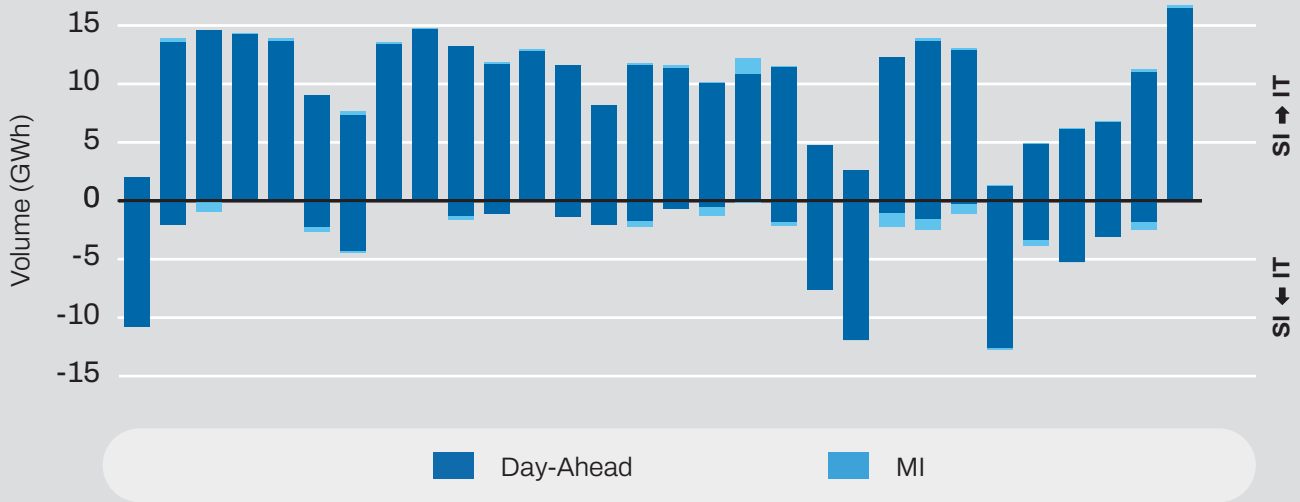
Daily Volatility of Base Price



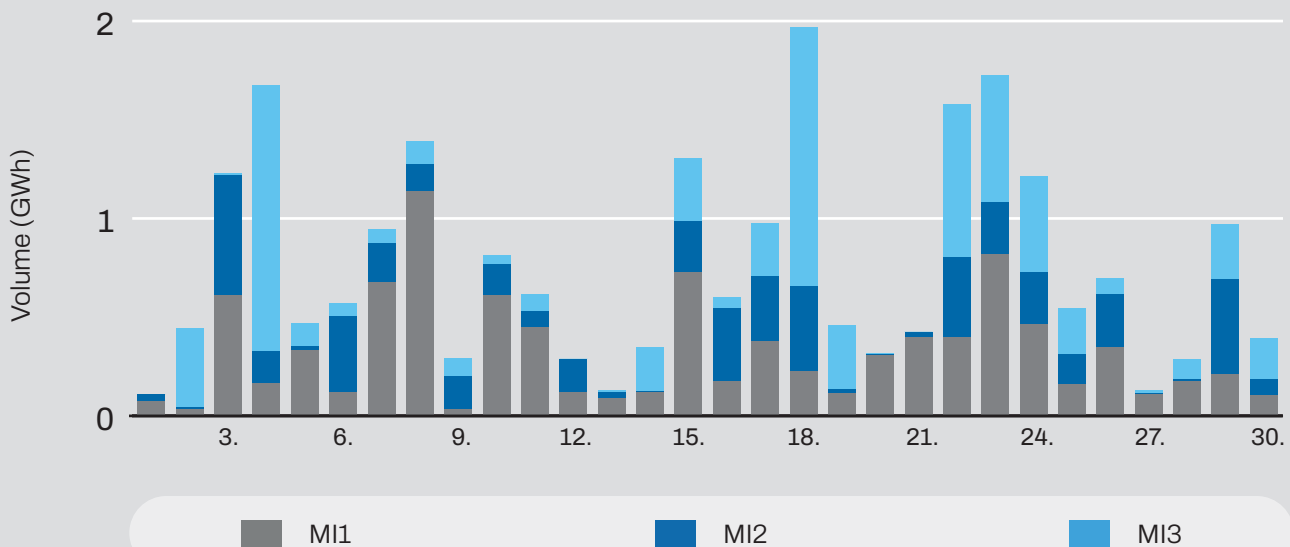
MI1, MI2, M3 Implicit Auctions

Cross-Zonal-Capacities		
	SI → IT	IT → SI
Offered (MWh)	431.413	1.743.409
Allocated (MWh)	4.446	8.293
% Allocated	1,03%	0,48%

Allocated CZC Values on Slovenian-Italian Border



Intraday Auction



Comparison

Day-Ahead Auction

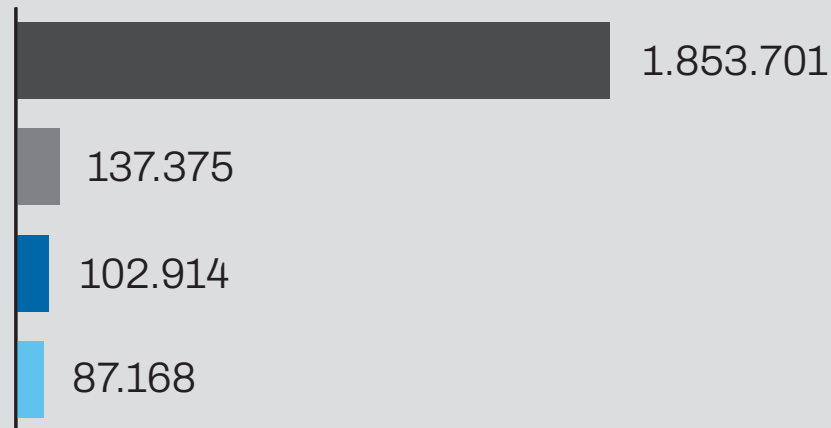
	April 2024	March 2024	April 2023
Avg. Daily Volume (MWh)	34.588	27.791	24.897
Avg. Hourly Volume (MWh)	1.441	1.160	1.037
Avg. Base Price (€/MWh)	60,18	64,1	106
Avg. Euro-Peak Price (€/MWh)	49,69	62,84	100,76

Day-Ahead Market Volumes and Prices



Past 12 Months Trade Information

Total Intraday Volumes (MWH)



Total Volume from May 2023

	Continuous	MI1	MI2	MI3
May	117.949	13.002	5.196	3.595
Jun	111.114	12.820	12.836	5.689
Jul	148.368	15.681	8.271	7.752
Aug	140.685	16.329	11.164	5.137
Sep	187.311	8.686	15.915	7.155
Oct	112.298	10.930	9.677	13.897
Nov	131.995	11.288	8.949	8.951
Dec	114.685	8.884	3.729	2.710
Jan	157.069	9.075	8.822	4.719
Feb	165.546	7.245	5.793	4.820
Mar	173.791	6.993	4.122	8.938
Apr	170.675	9.681	5.547	7.689

Continuous
 MI1
 MI2
 MI3

April 2024 Overall

Seepex

Day-Ahead
473.019 GWh
(+16% MoM)

Base Avg.
64,59 €/MWh
(0% MoM)

Daily
Average
15.767 GWh
(+20% MoM)

Daily
Record
18.616 GWh
(+10% MoM)

Day-Ahead

Volume (MWh)		
Total	473.019	↑15,9%
Avg. daily	15.767	↑19,7%
Max. daily	18.616	↑9,8%
Min. daily	11.894	↑24,8%

Price (€/MWh)				
	Avg. Daily	Max. Daily	Min. Daily	Spec. Daily Volatility
Base	64,59	98,65	29,82	16,42%
Euro-Peak	54,58	96,84	14,55	18,54%

Day-Ahead Volumes and Prices

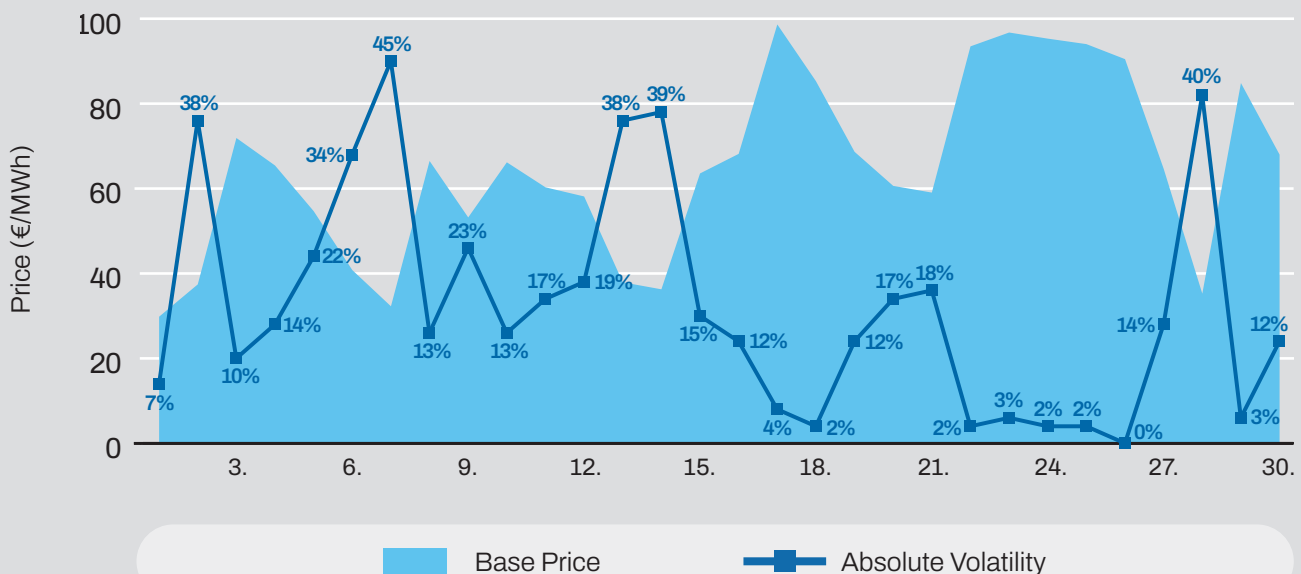


Day-Ahead Auction

Average Hourly Prices

Hour	Average Volume (MWh)	Average price (€/MWh)	Hour	Average Volume (MWh)	Average price (€/MWh)
1	552	65,98	13	789	34,68
2	538	61,65	14	800	31,46
3	540	59,00	15	799	31,87
4	548	58,43	16	781	37,11
5	556	60,38	17	691	46,84
6	559	66,46	18	635	64,46
7	618	79,93	19	696	82,81
8	635	88,47	20	678	108,56
9	652	76,39	21	668	113,33
10	677	57,06	22	653	91,27
11	738	44,42	23	622	79,16
12	764	39,30	24	578	71,07

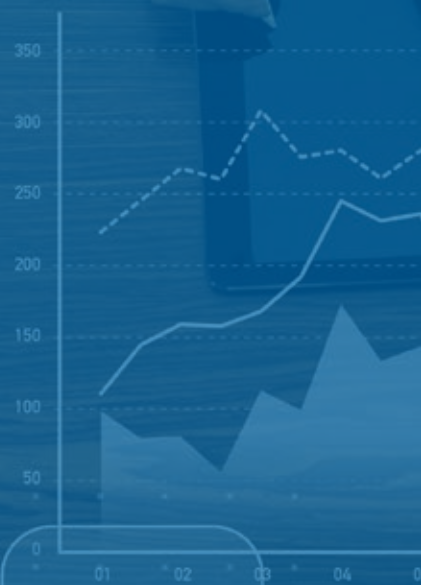
Daily Volatility of Base Price



Intraday trading on SEEPEX started on **25th July 2023**
 Number of participants: **20**



J	1,822	12,349,000
K	3,680	238,681,000
PL	1,062	65,678,000
EE	485	8,369,000
AH	8,569	189,301,000
PP	6,602	102,698,000
K	890	24,697,000
G	6,280	76,002,000
ID	2,436	57,610,000



1,822 (-35)	20,369 (+580)	890 (-20)
3,605 (+210)	9,542 (-128)	2,600 (+35)
3,204 (-33)	5,211 (+156)	7,100 (-60)
3,330 (-20)	712 (+12)	134 (+5)



ADEX GROUP holding company Ltd.

Dunajska cesta 156,
1000 Ljubljana, Slovenia

T SI +386 1/620 76 76

T RS +381 11 715 28 43

E info@adex-spot.com