



|   |                 |                  |                 |                  |
|---|-----------------|------------------|-----------------|------------------|
|   | 6,350<br>(-200) | 10,985<br>(+580) | 665<br>(-15)    | 6,800<br>(-115)  |
| 9 | 7,654<br>(+169) | 6,522<br>(+122)  | 1,632<br>(-54)  | 3,652<br>(+182)  |
| 0 | 7,150<br>(-150) | 782<br>(+74)     | 1,901<br>(+101) | 3,280<br>(-120)  |
|   | 2,022<br>(-18)  | 631<br>(+40)     | 6,287<br>(-57)  | 12,630<br>(+330) |

MONTHLY REPORT

**June 2024**

# June 2024 Overall

BSP SouthPool

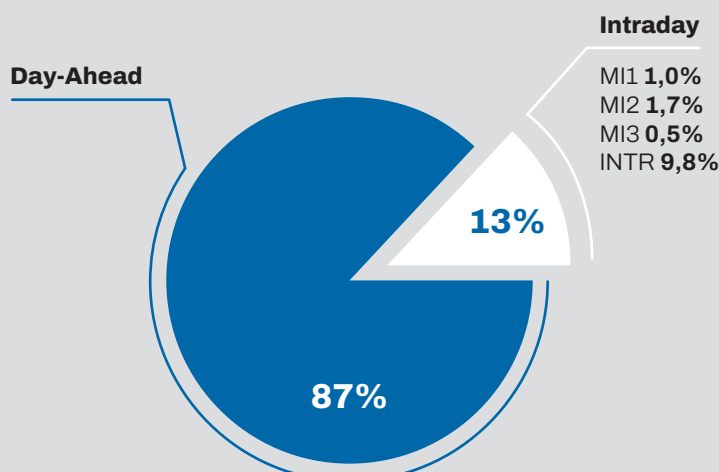
## Day-Ahead

| Volume (MWh) |           |         |
|--------------|-----------|---------|
| Total        | 1.182.728 | ↑ 17,3% |
| Avg. daily   | 39.424    | ↑ 21,2% |
| Max. daily   | 49.106    | ↑ 19,2% |
| Min. daily   | 24.851    | ↑ 16,1% |

| Price (€/MWh) |            |         |            |            |                        |
|---------------|------------|---------|------------|------------|------------------------|
|               | Avg. Daily |         | Max. Daily | Min. Daily | Spec. Daily Volatility |
| Base          | 92,73      | ↑ 26,8% | 139,57     | 15,19      | 14,72%                 |
| Euro-Peak     | 74,89      | ↑ 32,2% | 135,19     | -15,25     | 22,30%                 |

## Intraday

| Volume (MWh) |         |          |
|--------------|---------|----------|
| MI1          | 14.038  | ↑ 11,7%  |
| MI2          | 22.656  | ↑ 206,6% |
| MI3          | 5.756   | ↓ 11,9%  |
| INTR         | 133.400 | ↓ 12,9%  |



Day-Ahead  
**1.182.728 GWh**  
(+17,3% MoM)

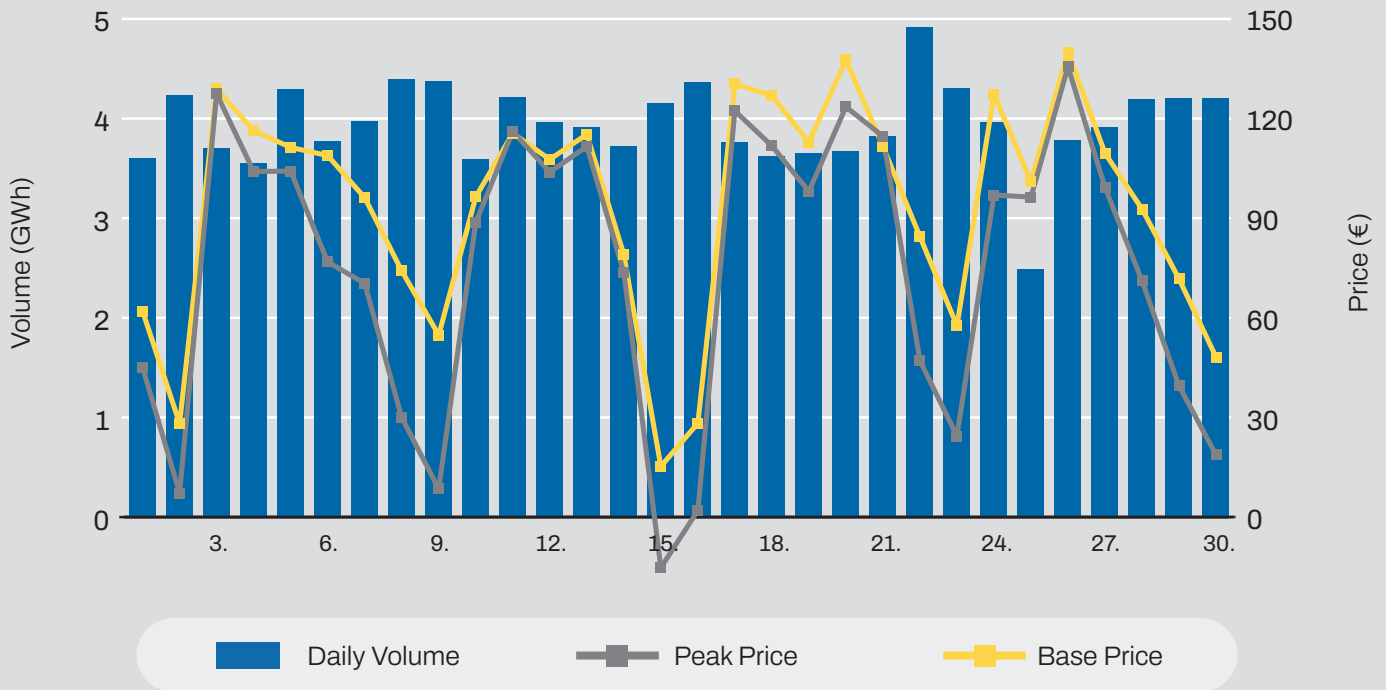
Base Avg.  
**92,73 €/MWh**  
(+26,8% MoM)

Intraday  
**175.850 GWh**  
(-2,1% MoM)

Daily Average  
**39.424 GWh**  
(+21,2% MoM)

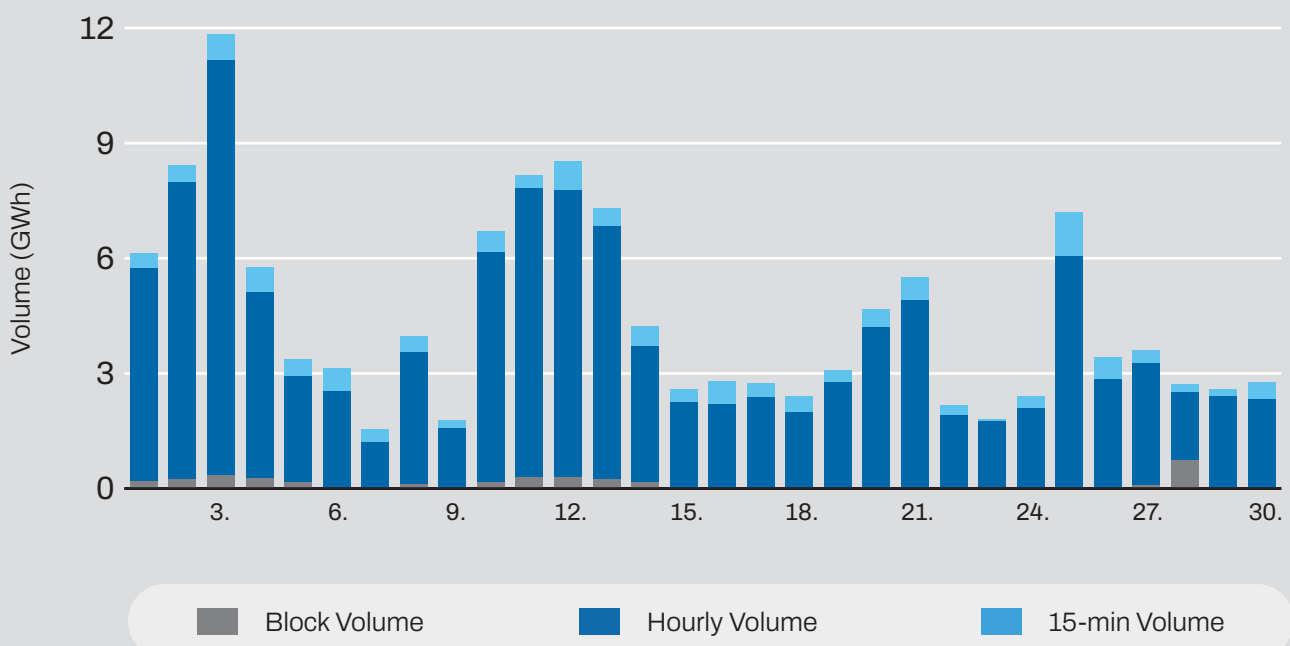
Daily Record  
**49.106 GWh**  
(+19,2% MoM)

## Day-Ahead Volumes and Prices



## Intraday Continuous Trading

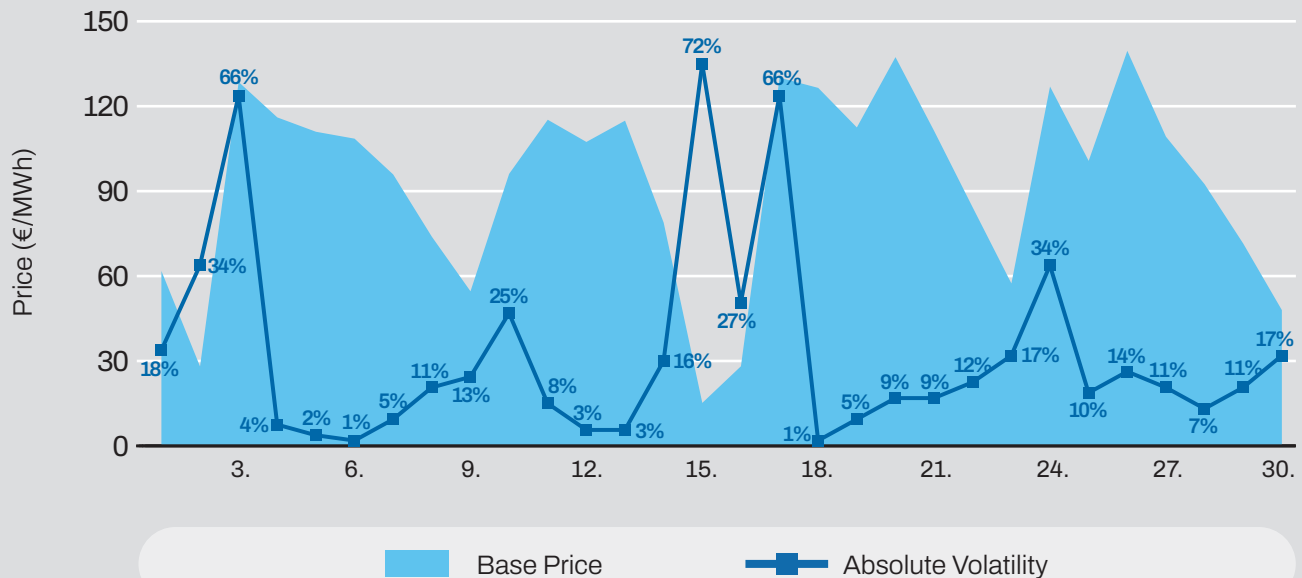
### Volumes by Products



## Average Monthly Day-Ahead Auction

| Average Hourly Prices |              |                       |      |              |                       | Cross-Zonal Capacities |                  |
|-----------------------|--------------|-----------------------|------|--------------|-----------------------|------------------------|------------------|
| Hour                  | Volume (MWh) | Average price (€/MWh) | Hour | Volume (MWh) | Average price (€/MWh) | Export/Import          | Allocated (MWh)  |
| 1                     | 1.798        | 96,21                 | 13   | 1.401        | 50,08                 | SI → IT                | 109.569          |
| 2                     | 1.716        | 89,12                 | 14   | 1.441        | 42,17                 | IT → SI                | 169.713          |
| 3                     | 1.657        | 82,95                 | 15   | 1.483        | 42,40                 | SI → AT                | 1.955            |
| 4                     | 1.636        | 81,69                 | 16   | 1.637        | 57,28                 | AT → SI                | 627.481          |
| 5                     | 1.635        | 79,24                 | 17   | 1.752        | 66,64                 | SI → HU                | 420.549          |
| 6                     | 1.584        | 85,23                 | 18   | 1.892        | 82,32                 | HU → SI                | 2.036            |
| 7                     | 1.512        | 95,63                 | 19   | 1.933        | 123,07                | SI → HR                | 527.938          |
| 8                     | 1.363        | 99,94                 | 20   | 1.987        | 174,84                | HR → SI                | 0                |
| 9                     | 1.259        | 85,70                 | 21   | 1.975        | 217,60                | <b>Total</b>           | <b>1.859.240</b> |
| 10                    | 1.265        | 66,91                 | 22   | 2.038        | 170,71                |                        |                  |
| 11                    | 1.316        | 54,92                 | 23   | 1.987        | 126,49                |                        |                  |
| 12                    | 1.345        | 52,33                 | 24   | 1.814        | 102,02                |                        |                  |

### Daily Volatility of Base Price

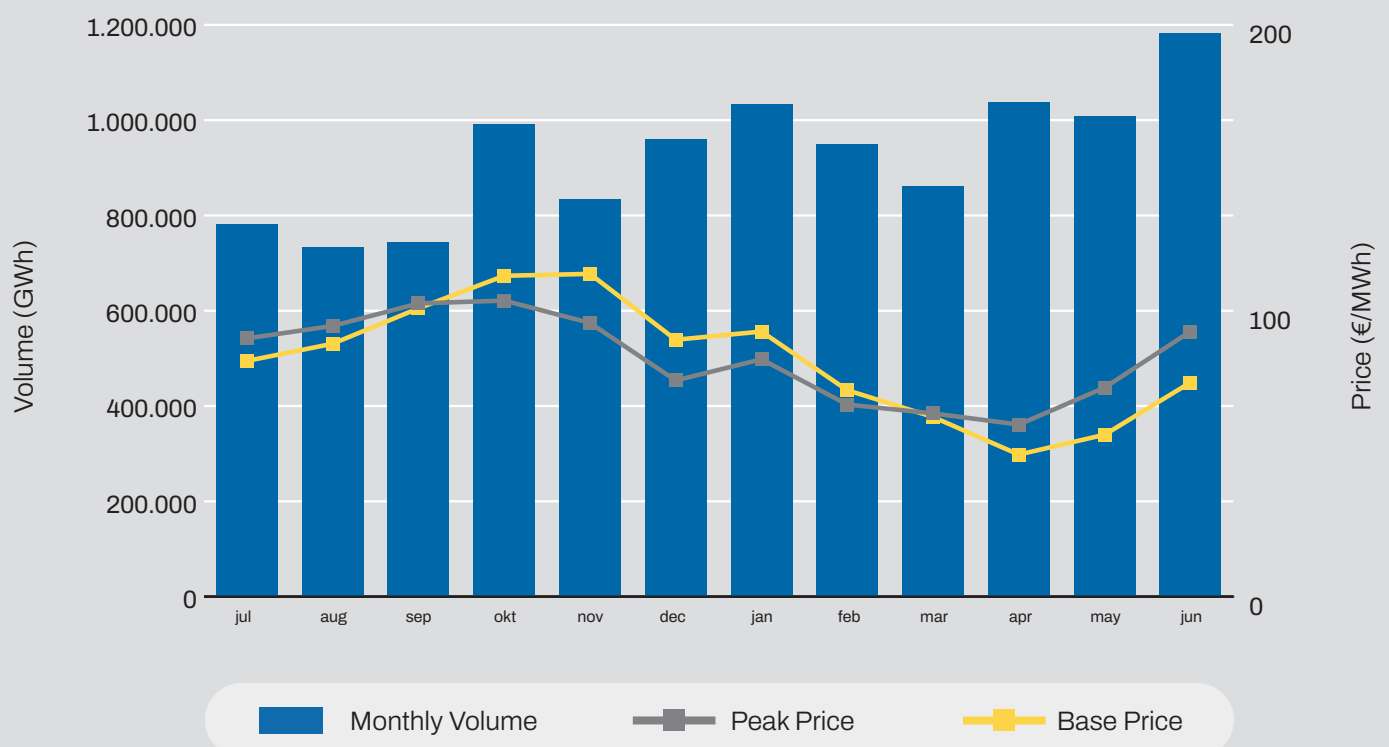


## Comparison

### Day-Ahead Auction

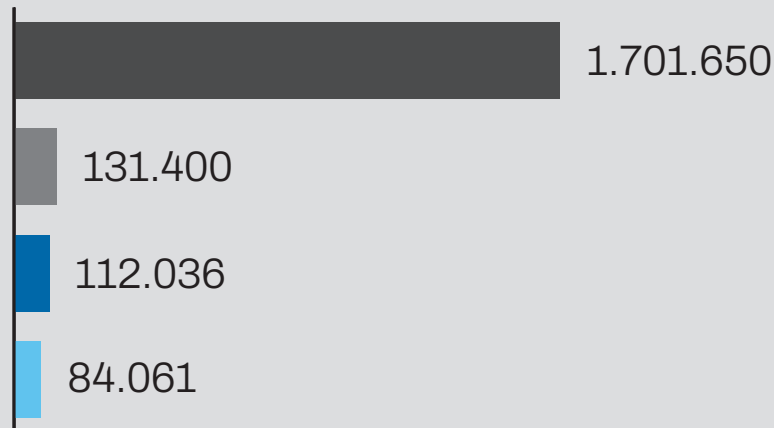
|                              | June 2024     | May 2024      | June 2023      |
|------------------------------|---------------|---------------|----------------|
| Avg. Daily Volume (MWh)      | <b>32.532</b> | <b>32.532</b> | <b>704.442</b> |
| Avg. Hourly Volume (MWh)     | <b>1.356</b>  | <b>1.356</b>  | <b>1.007</b>   |
| Avg. Base Price (€/MWh)      | <b>73,11</b>  | <b>73,11</b>  | <b>86,16</b>   |
| Avg. Euro-Peak Price (€/MWh) | <b>56,64</b>  | <b>56,64</b>  | <b>74,94</b>   |

### Day-Ahead Market Volumes and Prices



## Past 12 Months Trade Information

### Total Intraday Volumes (MWH)



### Total Volume from Jul 2023

|     | Continuous | MI1    | MI2    | MI3    |
|-----|------------|--------|--------|--------|
| Jul | 148.368    | 15.681 | 8.271  | 7.752  |
| Aug | 140.685    | 16.329 | 11.164 | 5.137  |
| Sep | 100.019    | 8.686  | 15.915 | 7.155  |
| Oct | 112.298    | 10.930 | 9.677  | 13.897 |
| Nov | 131.995    | 11.288 | 8.949  | 8.951  |
| Dec | 114.685    | 8.884  | 3.729  | 2.710  |
| Jan | 157.069    | 9.075  | 8.822  | 4.719  |
| Feb | 165.546    | 7.245  | 5.793  | 4.820  |
| Mar | 173.791    | 6.993  | 4.122  | 8.938  |
| Apr | 170.675    | 9.681  | 5.547  | 7.689  |
| May | 153.122    | 12.571 | 7.389  | 6.536  |
| Jun | 133.400    | 14.038 | 22.656 | 5.756  |

Continuous

MI1

MI2

MI3

# June 2024 Overall

Seepex

Day-Ahead  
**417.023 GWh**  
(+4,9% MoM)

Base Avg.  
**98,00 €/MWh**  
(+20,8% MoM)

Daily  
Average  
**13.901 GWh**  
(+8,4% MoM)

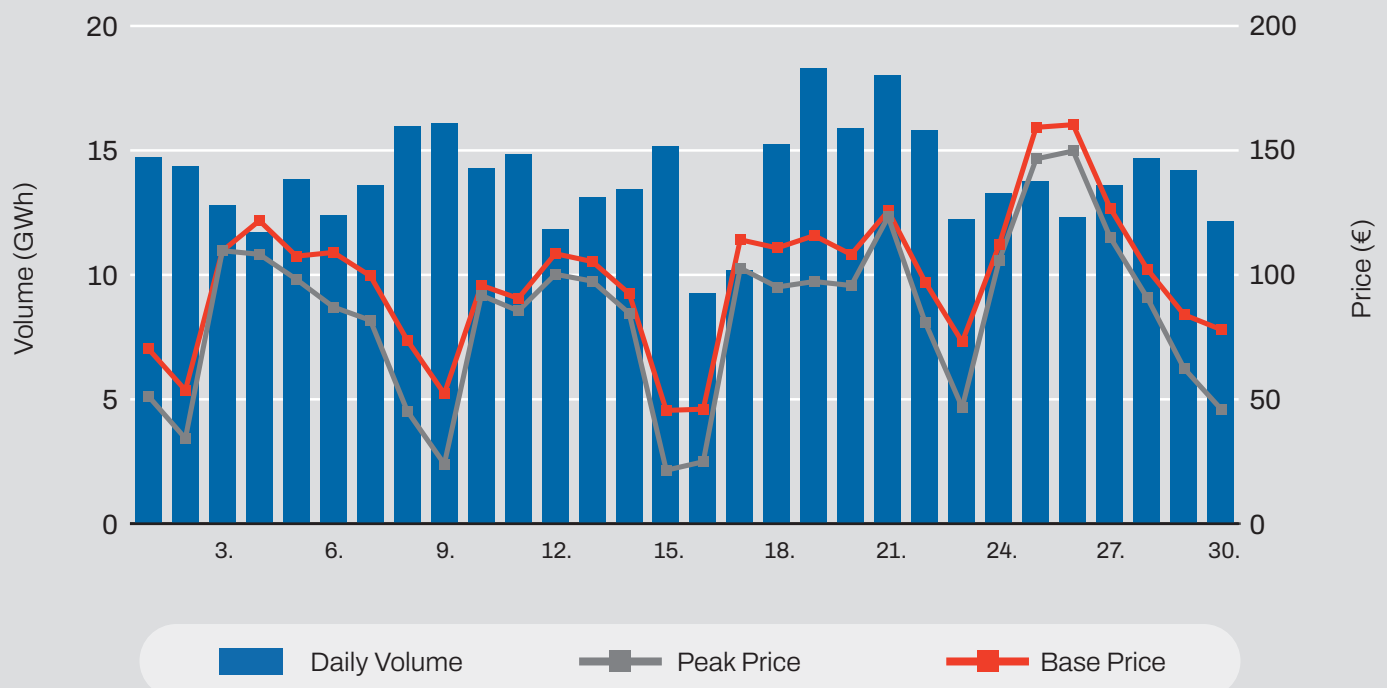
Daily  
Record  
**18.304 GWh**  
(+22,6% MoM)

## Day-Ahead

| Volume (MWh) |                |               |
|--------------|----------------|---------------|
| Total        | <b>417.023</b> | <b>↑4,9%</b>  |
| Avg. daily   | <b>13.901</b>  | <b>↑8,4%</b>  |
| Max. daily   | <b>18.304</b>  | <b>↑22,5%</b> |
| Min. daily   | <b>9.251</b>   | <b>↓9,2%</b>  |

| Price (€/MWh) |                            |               |              |                        |
|---------------|----------------------------|---------------|--------------|------------------------|
|               | Avg. Daily                 | Max. Daily    | Min. Daily   | Spec. Daily Volatility |
| Base          | <b>98,00</b> <b>↑20,8%</b> | <b>159,87</b> | <b>45,38</b> | <b>8,55%</b>           |
| Euro-Peak     | <b>83,20</b> <b>↑18,9%</b> | <b>149,34</b> | <b>21,41</b> | <b>18,57%</b>          |

## Day-Ahead Volumes and Prices

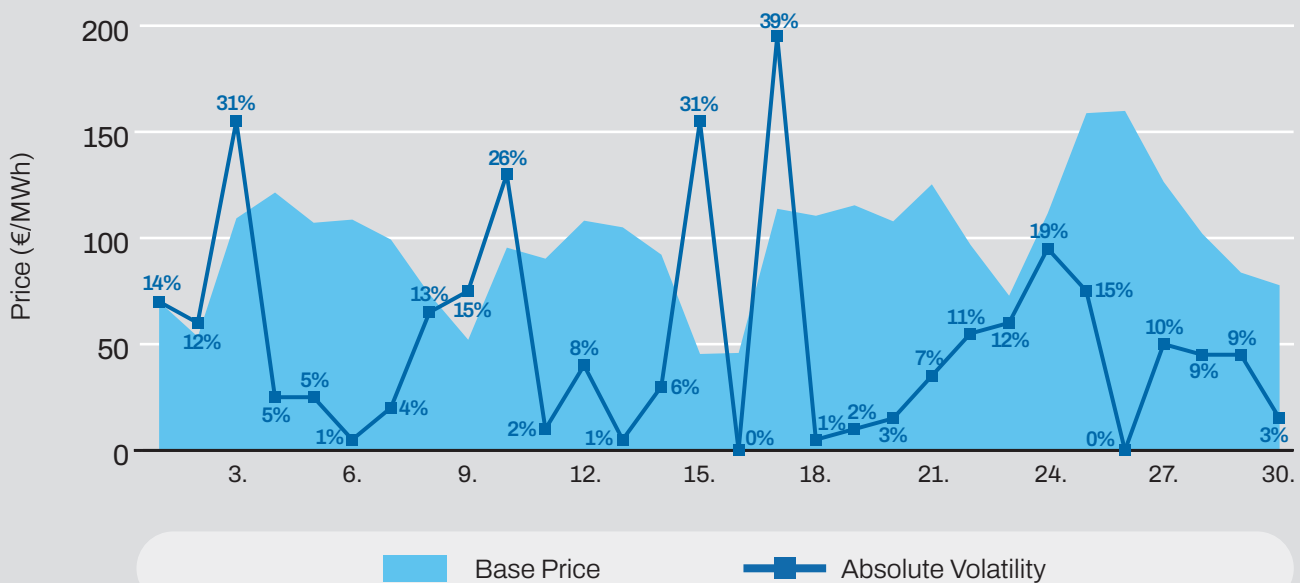


## Day-Ahead Auction

Average Hourly Prices

| Hour | Average Volume (MWh) | Average price (€/MWh) | Hour | Average Volume (MWh) | Average price (€/MWh) |
|------|----------------------|-----------------------|------|----------------------|-----------------------|
| 1    | 495                  | 100,90                | 13   | 760                  | 54,32                 |
| 2    | 523                  | 91,85                 | 14   | 757                  | 53,28                 |
| 3    | 513                  | 85,21                 | 15   | 732                  | 57,53                 |
| 4    | 513                  | 81,52                 | 16   | 680                  | 67,87                 |
| 5    | 516                  | 80,76                 | 17   | 610                  | 84,23                 |
| 6    | 527                  | 84,27                 | 18   | 538                  | 101,17                |
| 7    | 489                  | 96,72                 | 19   | 522                  | 129,79                |
| 8    | 510                  | 103,31                | 20   | 542                  | 176,04                |
| 9    | 538                  | 87,36                 | 21   | 531                  | 207,19                |
| 10   | 633                  | 69,13                 | 22   | 540                  | 182,23                |
| 11   | 702                  | 61,32                 | 23   | 526                  | 132,09                |
| 12   | 732                  | 56,37                 | 24   | 443                  | 107,45                |

## Daily Volatility of Base Price

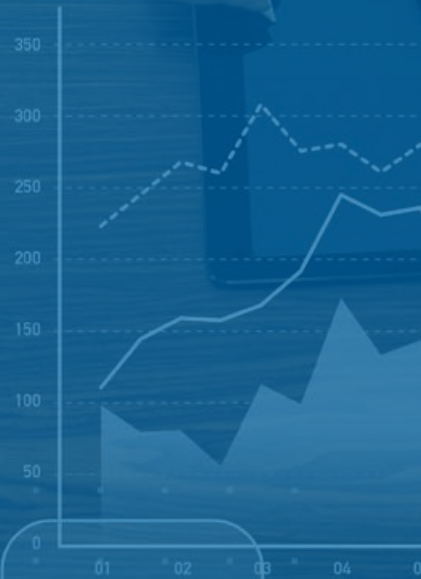


Intraday trading on SEEPEX started on **25th July 2023**  
 Number of participants: **20**





|    |       |             |
|----|-------|-------------|
| J  | 1,822 | 12,349,000  |
| K  | 3,680 | 238,681,000 |
| PL | 1,062 | 85,678,000  |
| EE | 485   | 8,369,000   |
| AH | 8,569 | 189,301,000 |
| PP | 6,602 | 102,698,000 |
| K  | 890   | 24,697,000  |
| G  | 6,280 | 76,002,000  |
| ID | 2,436 | 57,610,000  |



|                 |                  |                |
|-----------------|------------------|----------------|
| 1,822<br>(-35)  | 20,369<br>(+580) | 890<br>(-20)   |
| 3,605<br>(+210) | 9,542<br>(-128)  | 2,600<br>(+35) |
| 3,204<br>(-33)  | 5,211<br>(+156)  | 7,100<br>(-60) |
| 3,320<br>(-120) | 712<br>(+12)     | 134<br>(+5)    |



**ADEX GROUP holding company Ltd.**

Dunajska cesta 156,  
1000 Ljubljana, Slovenia

**T SI** +386 1/620 76 76  
**T RS** +381 11 715 28 43  
**E** info@adex-spot.com