



	6,350 (-200)	10,985 (+580)	665 (-15)	6,800 (-115)
9	7,654 (+169)	6,522 (+122)	1,632 (-54)	3,652 (+182)
0	7,150 (-150)	782 (+74)	1,901 (+101)	3,280 (-120)
	2,022 (-18)	631 (+40)	6,287 (-57)	12,630 (+330)

MONTHLY REPORT

**May 2024**

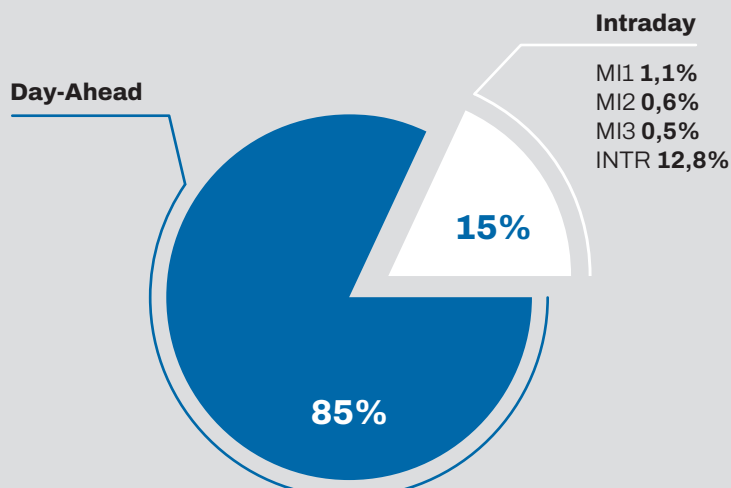
## Day-Ahead

Volume (MWh)		
Total	1.008.495	↓ 2,8%
Avg. daily	32.532	↓ 5,9%
Max. daily	41.191	↓ 0,5%
Min. daily	21.409	↓ 14,1%

Price (€/MWh)					
	Avg. Daily		Max. Daily	Min. Daily	Spec. Daily Volatility
Base	73,11	↑ 21,5%	103,44	12,18	14,72%
Euro-Peak	56,64	↑ 14,0%	97,56	-25,19	22,30%

## Intraday

Volume (MWh)		
MI1	12.571	↑ 29,9%
MI2	7.389	↑ 33,2%
MI3	6.536	↓ 15,0%
INTR	153.122	↓ 10,3%



Day-Ahead  
**1.008.495 GWh**  
(-2,8% MoM)

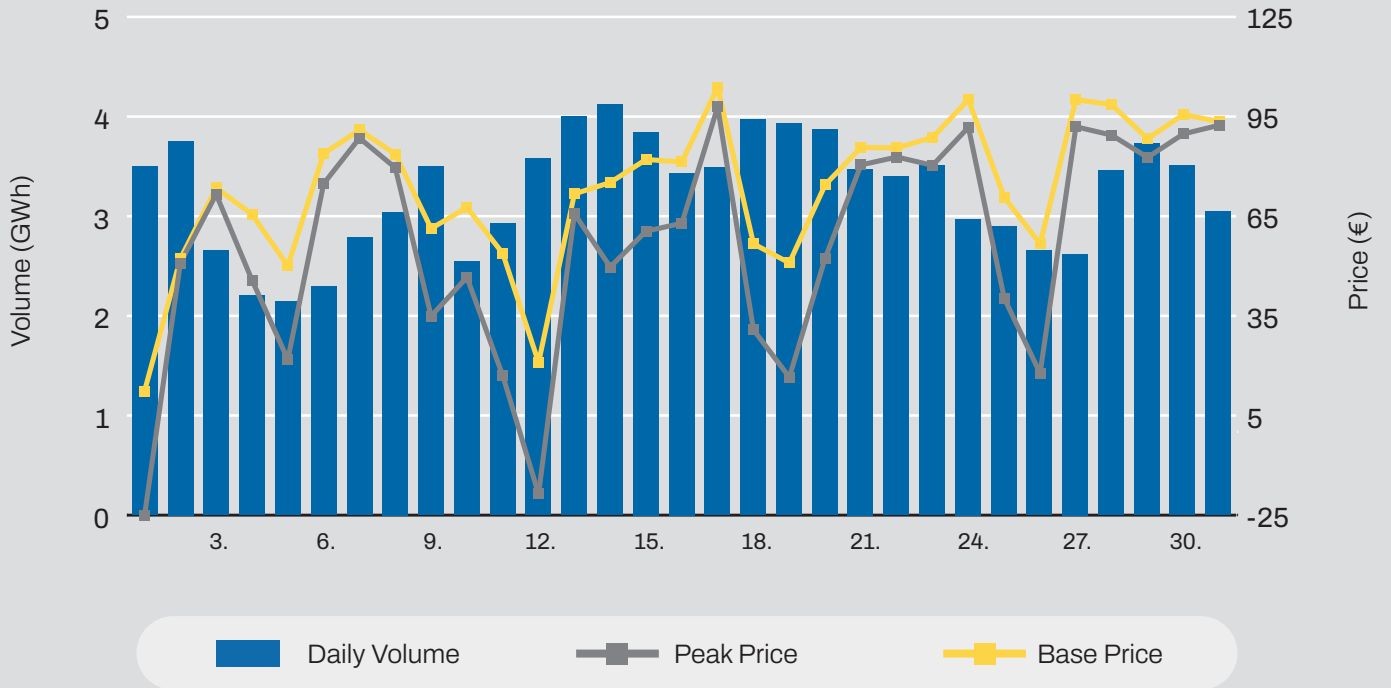
Base Avg.  
**73,11 €/MWh**  
(+21,5% MoM)

Intraday  
**179.619GWh**  
(-7,2% MoM)

Daily Average  
**32.532 GWh**  
(-6,0% MoM)

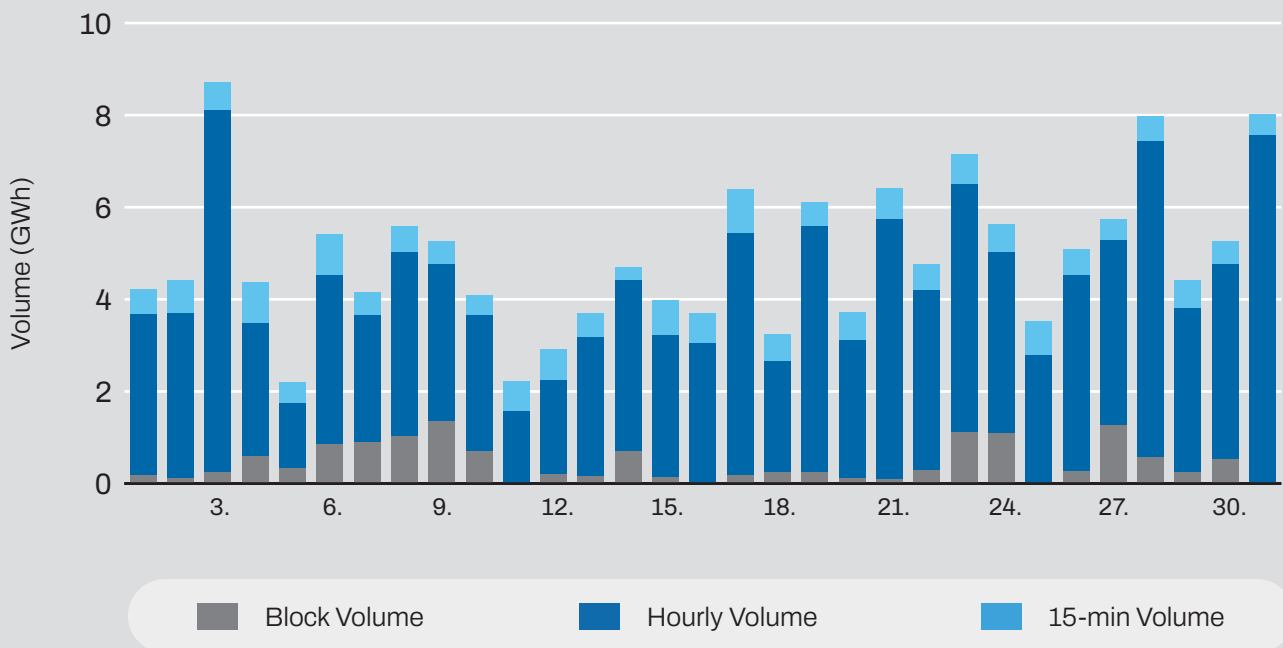
Daily Record  
**41.191 GWh**  
(-0,5% MoM)

## Day-Ahead Volumes and Prices



## Intraday Continuous Trading

### Volumes by Products

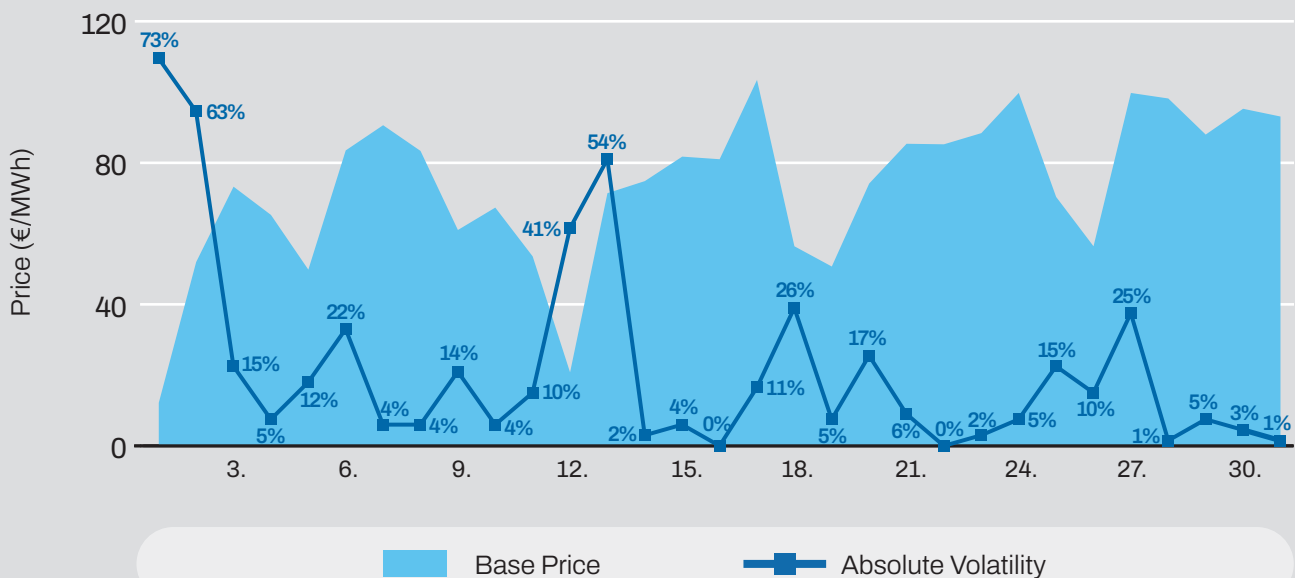


## Average Monthly Day-Ahead Auction

Average Hourly Prices					
Hour	Volume (MWh)	Average price (€/MWh)	Hour	Volume (MWh)	Average price (€/MWh)
1	1.500	80,75	13	1.281	27,34
2	1.431	75,01	14	1.333	22,83
3	1.354	71,28	15	1.351	22,88
4	1.336	68,26	16	1.349	38,27
5	1.324	69,39	17	1.393	52,33
6	1.304	76,48	18	1.397	75,25
7	1.272	89,98	19	1.503	96,39
8	1.211	96,20	20	1.490	123,80
9	1.051	81,39	21	1.516	145,49
10	1.115	58,73	22	1.528	117,38
11	1.229	44,67	23	1.501	96,70
12	1.282	35,75	24	1.482	88,00

Cross-Zonal Capacities	
Export/Import	Allocated (MWh)
SI → IT	191.302
IT → SI	73.424
SI → AT	12.816
AT → SI	653.573
SI → HU	205.084
HU → SI	61.730
SI → HR	413.436
HR → SI	2.288
<b>Total</b>	<b>1.613.653</b>

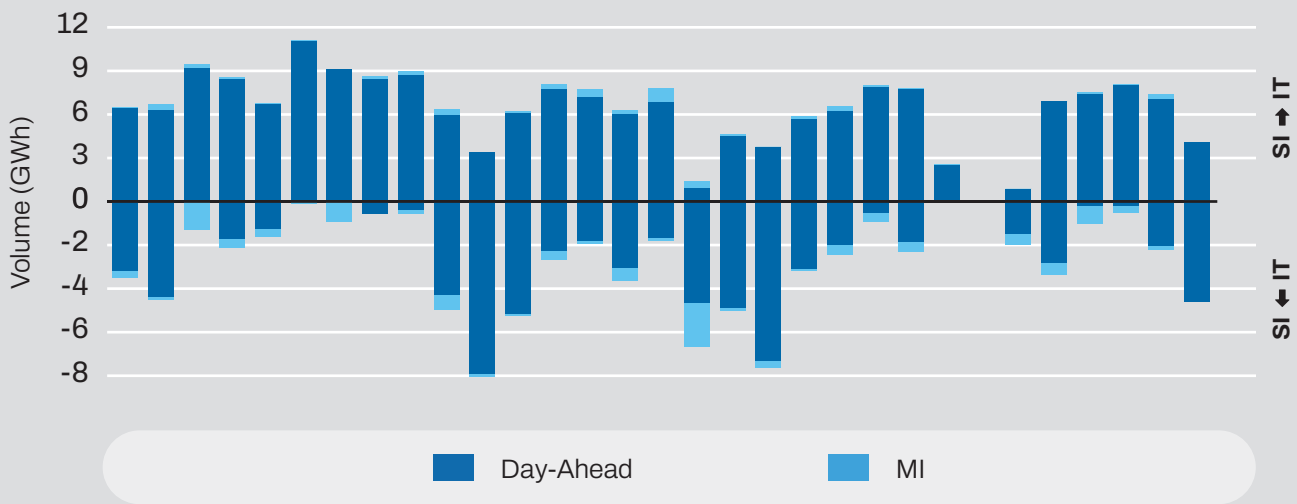
### Daily Volatility of Base Price



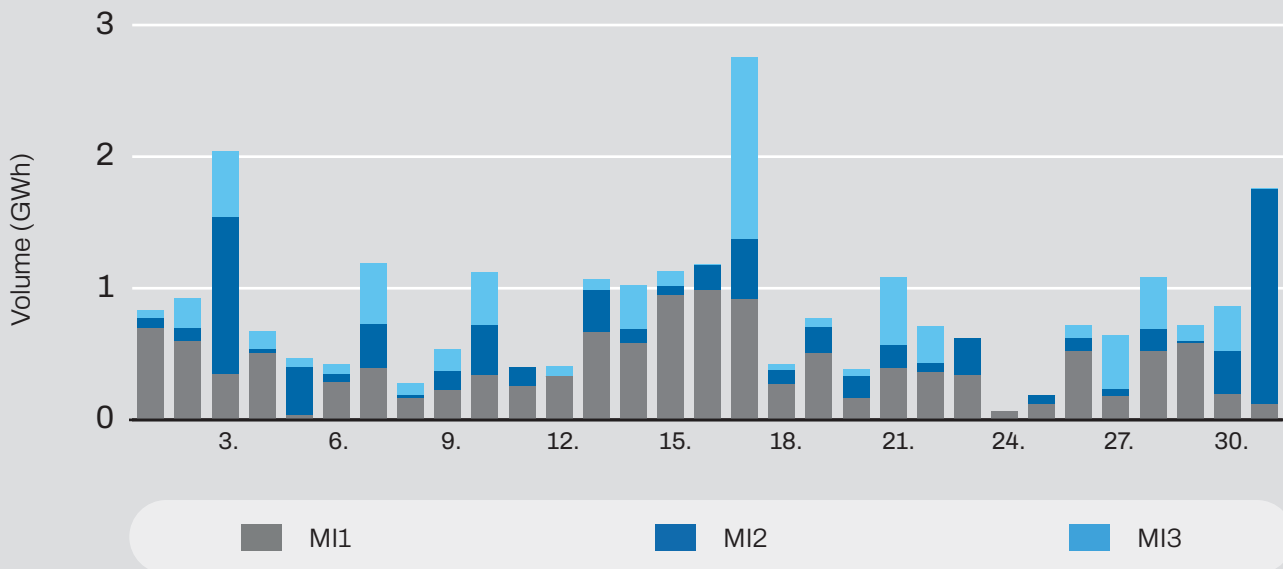
## MI1, MI2, M3 Implicit Auctions

Cross-Zonal-Capacities		
	SI → IT	IT → SI
Offered (MWh)	358.277	1.301.885
Allocated (MWh)	5.903	12.012
% Allocated	1,65%	0,92%

### Allocated CZC Values on Slovenian-Italian Border



## Intraday Auction

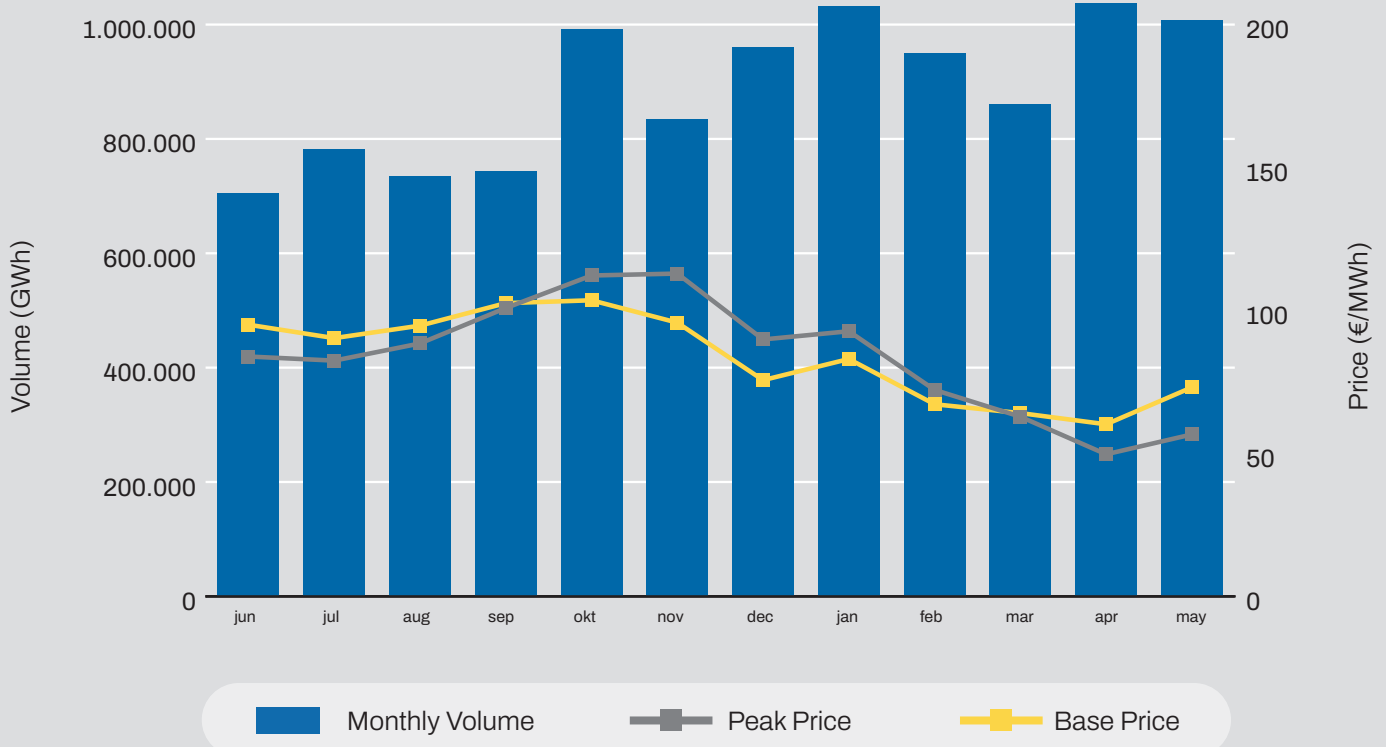


## Comparison

### Day-Ahead Auction

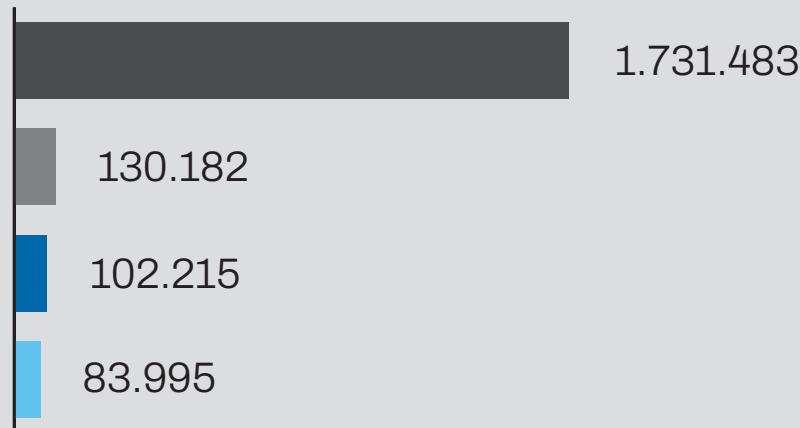
	May 2024	April 2024	May 2023
Avg. Daily Volume (MWh)	<b>32.532</b>	<b>34.588</b>	<b>24.164</b>
Avg. Hourly Volume (MWh)	<b>1.356</b>	<b>1.441</b>	<b>1.007</b>
Avg. Base Price (€/MWh)	<b>73,11</b>	<b>60,18</b>	<b>86,16</b>
Avg. Euro-Peak Price (€/MWh)	<b>56,64</b>	<b>49,69</b>	<b>74,94</b>

### Day-Ahead Market Volumes and Prices



## Past 12 Months Trade Information

### Total Intraday Volumes (MWH)



### Total Volume from Jun 2023

	Continuous	MI1	MI2	MI3
Jun	111.114	12.820	12.836	5.689
Jul	148.368	15.681	8.271	7.752
Aug	140.685	16.329	11.164	5.137
Sep	187.311	8.686	15.915	7.155
Oct	112.298	10.930	9.677	13.897
Nov	131.995	11.288	8.949	8.951
Dec	114.685	8.884	3.729	2.710
Jan	157.069	9.075	8.822	4.719
Feb	165.546	7.245	5.793	4.820
Mar	173.791	6.993	4.122	8.938
Apr	170.675	9.681	5.547	7.689
May	117.949	12.571	7.389	6.536

Continuous
  MI1
  MI2
  MI3

# May 2024 Overall

Seepex

Day-Ahead  
**397.410 GWh**  
(-16,0% MoM)

Base Avg.  
**81,15 €/MWh**  
(+25,6% MoM)

Daily  
Average  
**12.820 GWh**  
(-18,7% MoM)

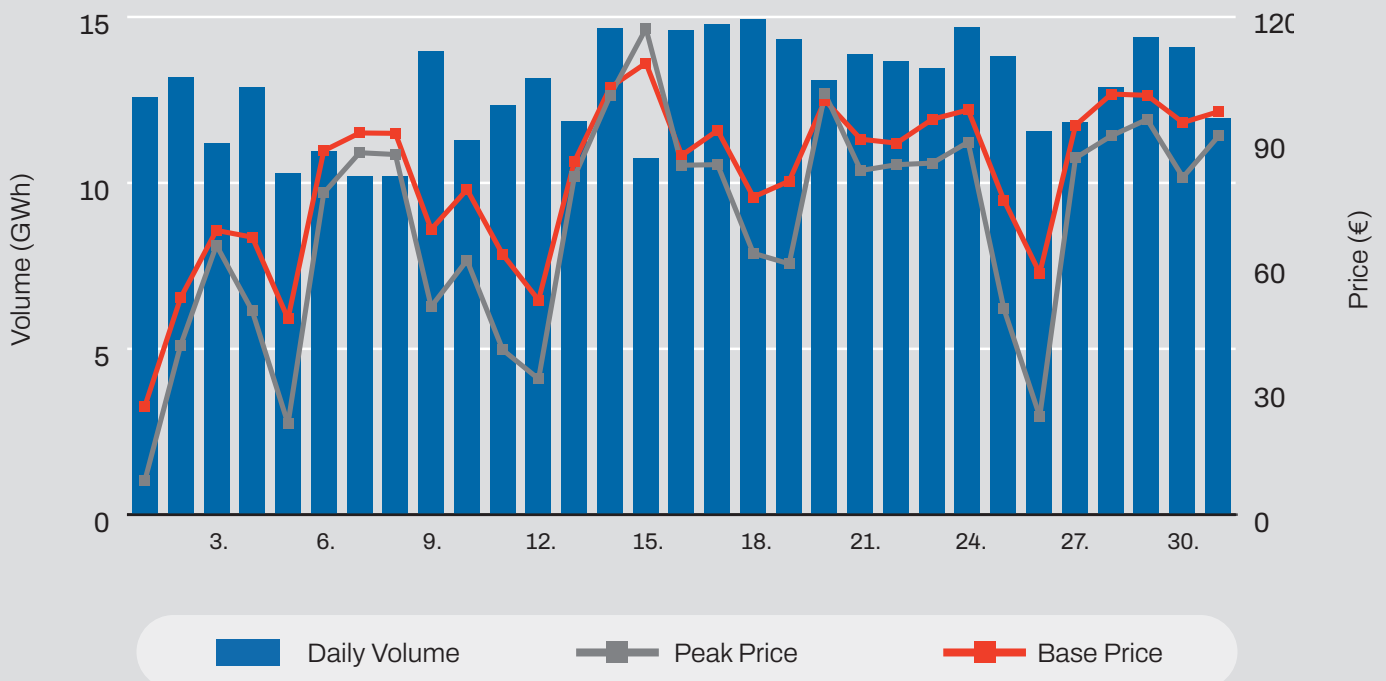
Daily  
Record  
**14.936 GWh**  
(-19,8% MoM)

## Day-Ahead

Volume (MWh)		
Total	<b>397.410</b>	<b>↓ 16,0%</b>
Avg. daily	<b>12.820</b>	<b>↓ 18,7%</b>
Max. daily	<b>14.936</b>	<b>↓ 19,8%</b>
Min. daily	<b>10.185</b>	<b>↓ 14,4%</b>

Price (€/MWh)				
	Avg. Daily	Max. Daily	Min. Daily	Spec. Daily Volatility
Base	<b>81,15</b>	<b>108,57</b>	<b>26,05</b>	<b>8,55%</b>
Euro-Peak	<b>69,95</b>	<b>116,88</b>	<b>8,16</b>	<b>18,57%</b>

## Day-Ahead Volumes and Prices



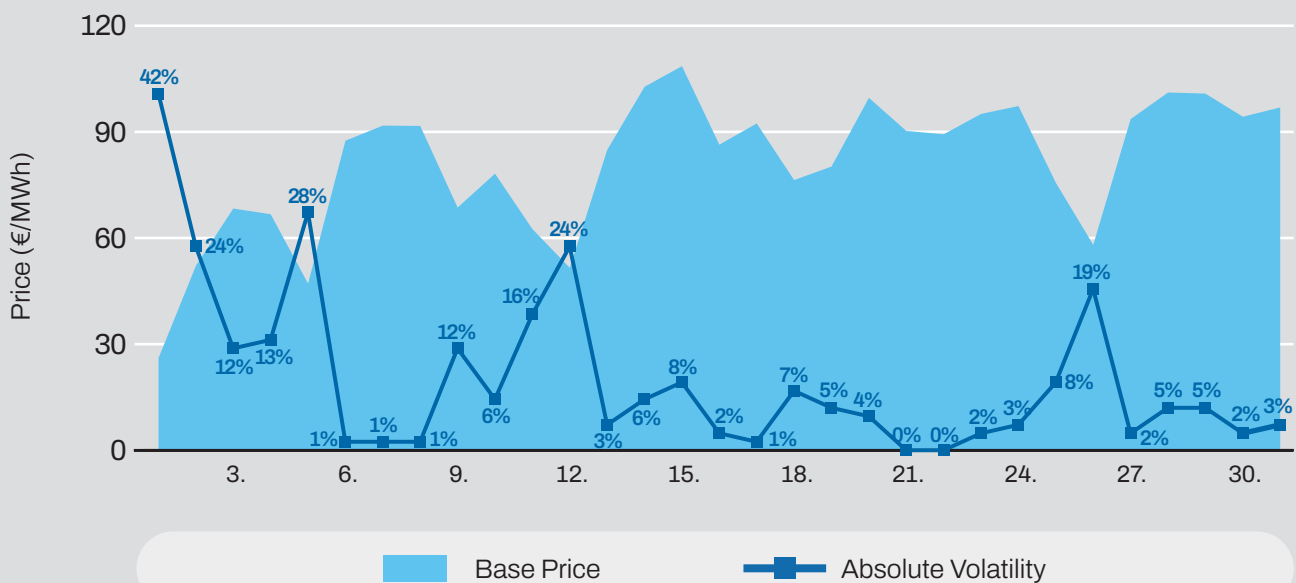


## Day-Ahead Auction

Average Hourly Prices

Hour	Average Volume (MWh)	Average price (€/MWh)	Hour	Average Volume (MWh)	Average price (€/MWh)
1	462	85,28	13	770	49,22
2	440	79,84	14	760	48,07
3	419	74,85	15	733	49,00
4	417	73,09	16	674	55,08
5	419	74,70	17	562	65,15
6	416	79,50	18	446	82,51
7	438	90,26	19	463	98,87
8	466	97,44	20	497	125,35
9	526	84,58	21	493	144,27
10	614	68,40	22	467	121,74
11	680	59,83	23	459	97,71
12	755	53,32	24	443	89,59

## Daily Volatility of Base Price



Intraday trading on SEEPEX started on **25th July 2023**  
 Number of participants: **20**



**ADEX GROUP holding company Ltd.**

Dunajska cesta 156,  
1000 Ljubljana, Slovenia

**T SI** +386 1 /620 76 76

**T RS** +381 11 715 28 43

**E** info@adex-spot.com